

FK SERIES

FK Series is a compact and neat design for small items and fast transportation.
It is also used for twin track application for pallet assembly line.

FK Series Characteristic

Beam Width: 45mm

Product Width: Refer to Guide Rail Assembly

Accessories Needed

Slide Rail Required: FASR-25K OR FASR-25KU

Slide Rail Colour: WHITE OR NATURAL COLOUR

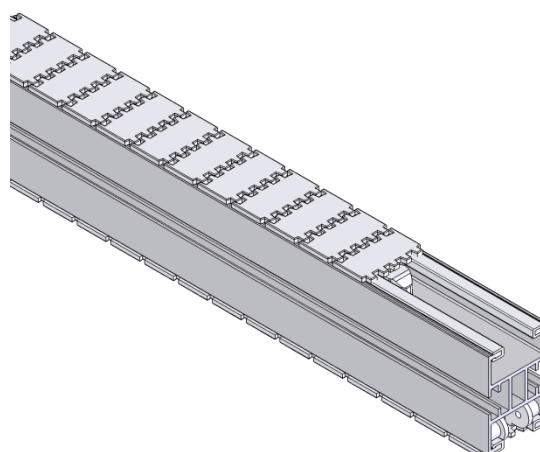
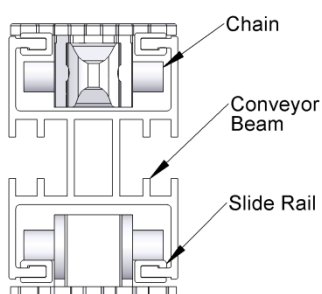
Slide Rail Material: HDPE OR UHMW-PE

Slide Rail Rivet: FASLR-3X6

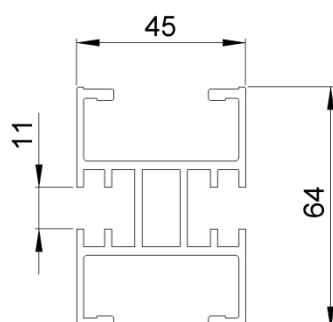
Connecting strip is used to connect 2 beams.

Connecting Strip: FACS-20x140

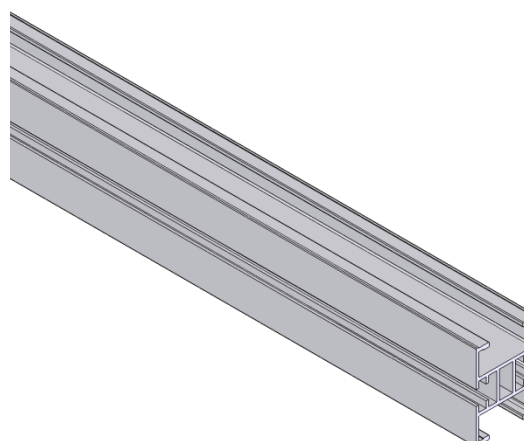
FK



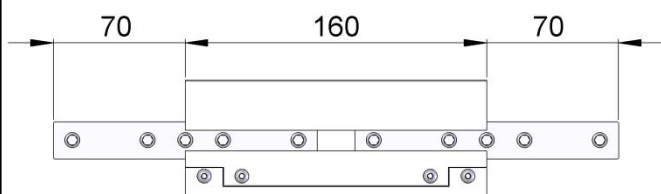
Conveyor Beam **FKCB-3**



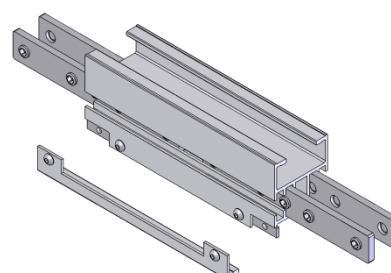
UOM : 3 Meter / Length



Chain Connecting Module **FKCC-160**



UOM: pc

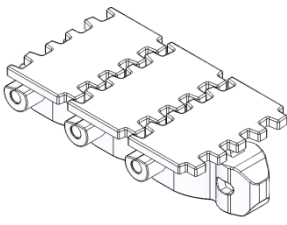
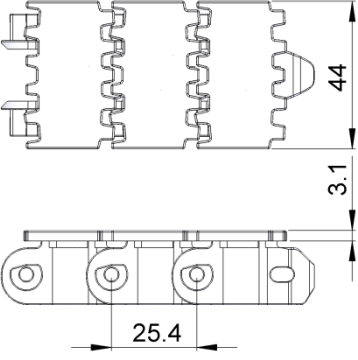
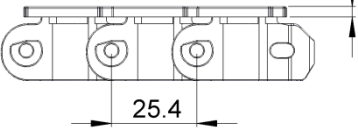
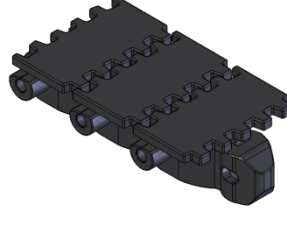
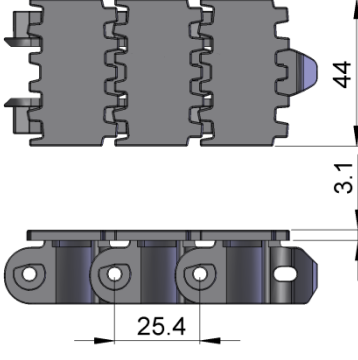
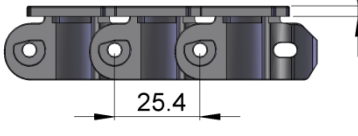


FK SERIES

Chain Common Data

Packaging: 5m per box
Pitch: 25.4mm
Width: 44mm
Tensile Strength at 20°C: 4000N
Colour: White & Black (Conductive)

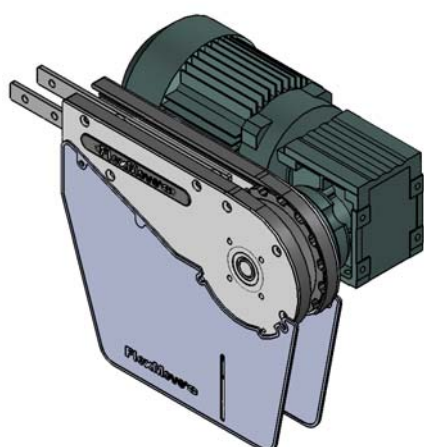
Material :-
Chain: White Acetal / POM
Pivot: Polyamide
Pivot Pin : Stainless Steel
Insert (Wedge & Friction): TPE Grey

Standard Plain Chain FKPC-5	Conductive Chain FKPC-5CD
  	  
<p>UOM: 5 Meter / box</p> <p>Application: Suitable for horizontal and slope < 5° transport of products with accumulation.</p>	<p>UOM: 5 Meter / box</p> <p>Application: Suitable for transport of static sensitive product.</p>

FK

FK SERIES

FK Direct End Drive with Motor (LEFT)
FKDD-320-0.25L1, 0.37L1, 0.55L1



Max Traction Force : 500N

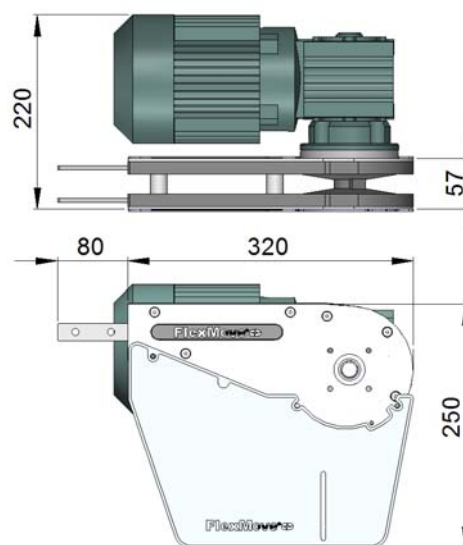
The Direct End Drive Unit is without torque limiter. Standard attached gear motors are with SEW motor size 0.25kW, 0.37kW & 0.55kW. FKDD-320-0L represents direct drive without motor. Multi channel drives are available upon request.

UOM : pc

Chain required 2-way : 0.8 meter

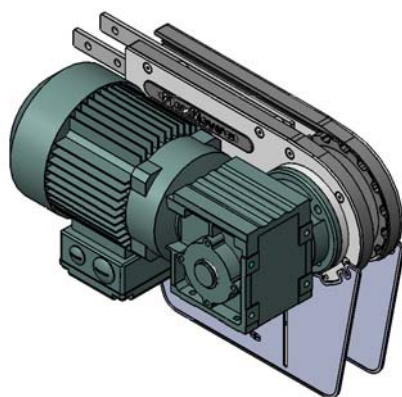
Slide rail required 2-way : 0.5 meter

FK Direct End Drive without Motor (LEFT)
FKDD-0L1



FK

FK Direct End Drive with Motor (RIGHT)
FKDD-320-0.25R1, 0.37R1, 0.55R1



Max Traction Force : 500N

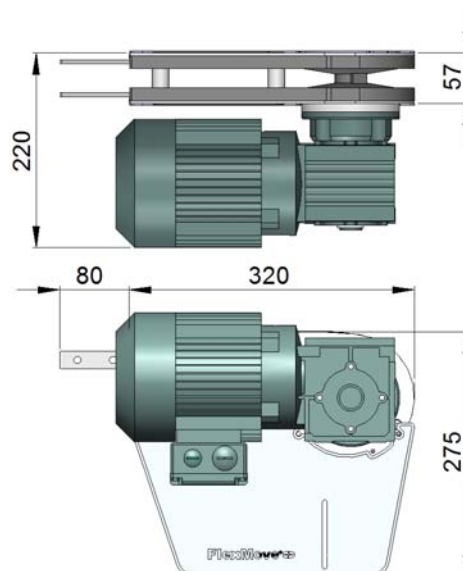
The Direct End Drive Unit is without torque limiter. Standard attached gear motors are with SEW motor size 0.25kW, 0.37kW & 0.55kW. FKDD-320-0R represents direct drive without motor. Multi channel drives are available upon request.

UOM : pc

Chain required 2-way : 0.8 meter

Slide rail required 2-way : 0.5 meter

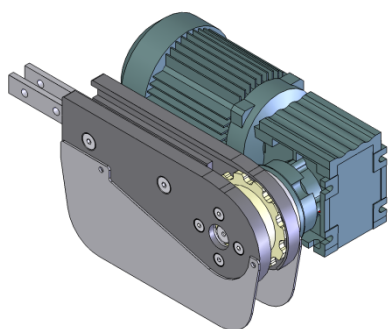
FK Direct End Drive without Motor (RIGHT)
FKDD-0R1



SEW gear motors are products of SEW Eurodrive.

FK SERIES

FK Direct End Drive with Motor (LEFT)
FKDD-250-0.25L, 0.37L, 0.55L



Max Traction Force : 400N

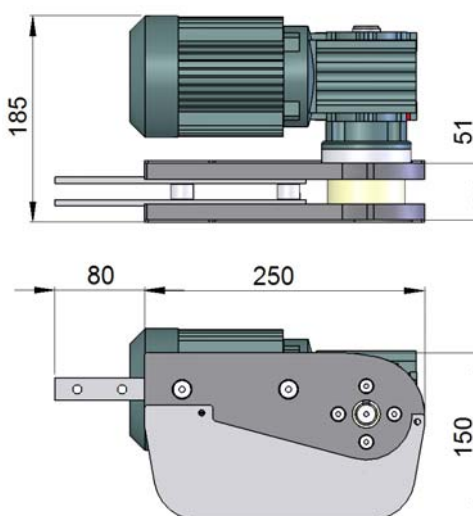
The Direct End Drive Unit is without torque limiter. Standard attached gear motors are with SEW motor size is 0.12kW. FKDD-250-0L represents direct drive without gear motor. Multi channel drives are available upon request.

UOM : pc

Chain required 2-way : 0.55 meter

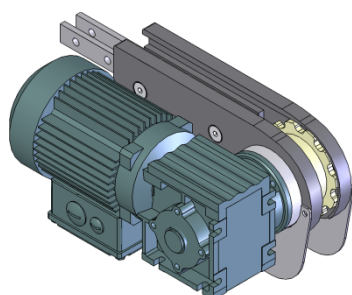
Slide rail required 2-way: 0

FK Direct End Drive without Motor (LEFT)
FKDD-250-0L



FK

FK Direct End Drive with Motor (RIGHT)
FKDD-250-0.25R, 0.37R, 0.55R



Max Traction Force : 400N

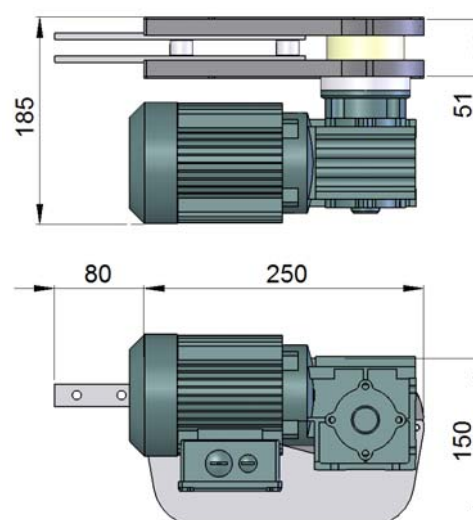
The Direct End Drive Unit is without torque limiter. Standard attached gear motors are with SEW motor size is 0.12kW. FKDD-250-0R represents direct drive without gear motor. Multi channel drives are available upon request.

UOM : pc

Chain required 2-way : 0.55 meter

Slide rail required 2-way: 0

FK Direct End Drive without Motor (RIGHT)
FKDD-250-0R



SEW gear motors are products of SEW Eurodrive.

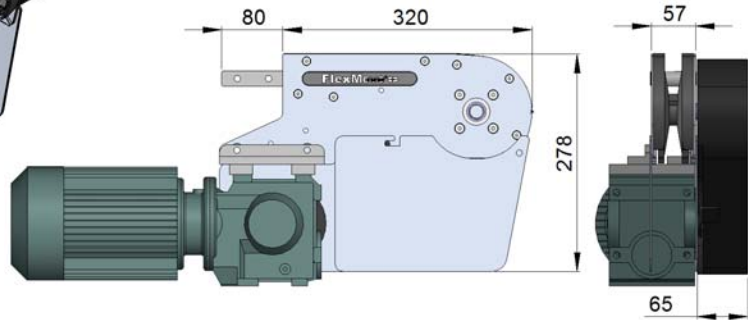
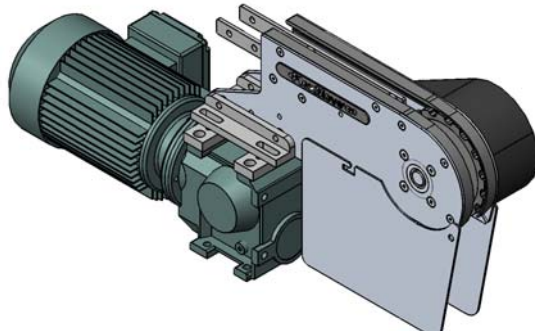
FK SERIES

FK

FK Suspended End Drive with Motor (LEFT)
FKSD-0.25L1, 0.37L1, 0.55L1



FK Suspended End Drive without Motor (LEFT)
FKSD-0L1



Max Traction Force : 500N

The Suspended End Drive Unit is with torque limiter. Standard attached gear motors are with SEW motor size 0.25kW, 0.37kW & 0.55kW. FKSD-0L represents direct drive without gear motor.

UOM : pc

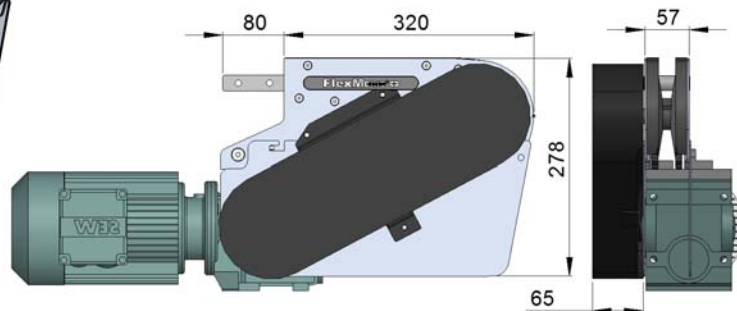
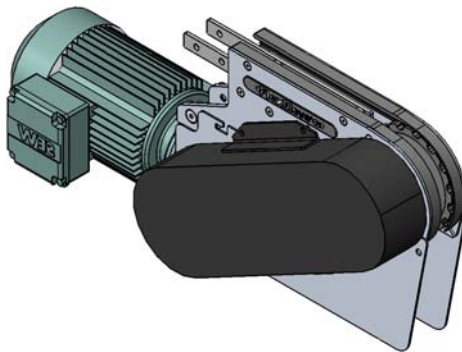
Chain required 2-way : 0.8 meter

Slide rail required 2-way: 0.5 meter

FK Suspended End Drive with Motor (RIGHT)
FKSD-0.25R1, 0.37R1, 0.55R1



FK Suspended End Drive without Motor (RIGHT)
FKSD-0R1



Max Traction Force : 500N

The Suspended End Drive Unit is with torque limiter. Standard attached gear motors are with SEW motor size 0.25kW, 0.37kW & 0.55kW. FKSD-0R represents direct drive without gear motor.


UOM : pc


Chain required 2-way : 0.8 meter

Slide rail required 2-way: 0.5 meter

SEW gear motors are products of SEW Eurodrive.

FK SERIES

FK Direct Intermediate Drive with Motor (LEFT) FKID-DD-0.25L1, 0.37L1, 0.55L1		FK Direct Intermediate Drive without Motor (LEFT) FKID-DD-0L1
<div data-bbox="1458 349 1522 394" style="border: 1px solid black; padding: 2px; text-align: center;">FK</div> <div data-bbox="197 389 572 770"> </div> <div data-bbox="620 456 1179 826"> </div> <div data-bbox="1187 456 1426 826"> </div> <p>Max Traction Force : 200N</p> <p>The Direct Intermediate Drive Unit is without torque limiter. Standard attached gear motors are with SEW motor size 0.25kW, 0.37kW & 0.55kW. FKID-DD-0L represents direct drive without gear motor. Maximum traction force for FKID-DD is lower than FKDD and FKSD.</p> <div data-bbox="145 994 783 1088" style="border: 1px solid black; padding: 5px;"> <p>UOM : pc</p> <p>Chain required 2-way : 1.2 meter</p> <p>Slide rail required 2-way: 1.1 meter</p> </div>		

FK Direct Intermediate Drive with Motor (RIGHT) FKID-DD-0.25R1, 0.37R1, 0.55R1		FK Direct Intermediate Drive without Motor (RIGHT) FKID-DD-0R1
<div data-bbox="181 1352 596 1688"> </div> <div data-bbox="620 1397 1179 1722"> </div> <div data-bbox="1187 1352 1426 1722"> </div> <p>Max Traction Force : 200N</p> <p>The Direct Intermediate Drive Unit is without torque limiter. Standard attached gear motors are with SEW motor size 0.25kW, 0.37kW & 0.55kW. FKID-DD-0R represents direct drive without gear motor. Maximum traction force for FKID-DD is lower than FKDD and FKSD.</p> <div data-bbox="145 1912 783 2004" style="border: 1px solid black; padding: 5px;"> <p>UOM : pc</p> <p>Chain required 2-way : 1.2 meter</p> <p>Slide rail required 2-way: 1.1 meter</p> </div>		

SEW gear motors are products of SEW Eurodrive.

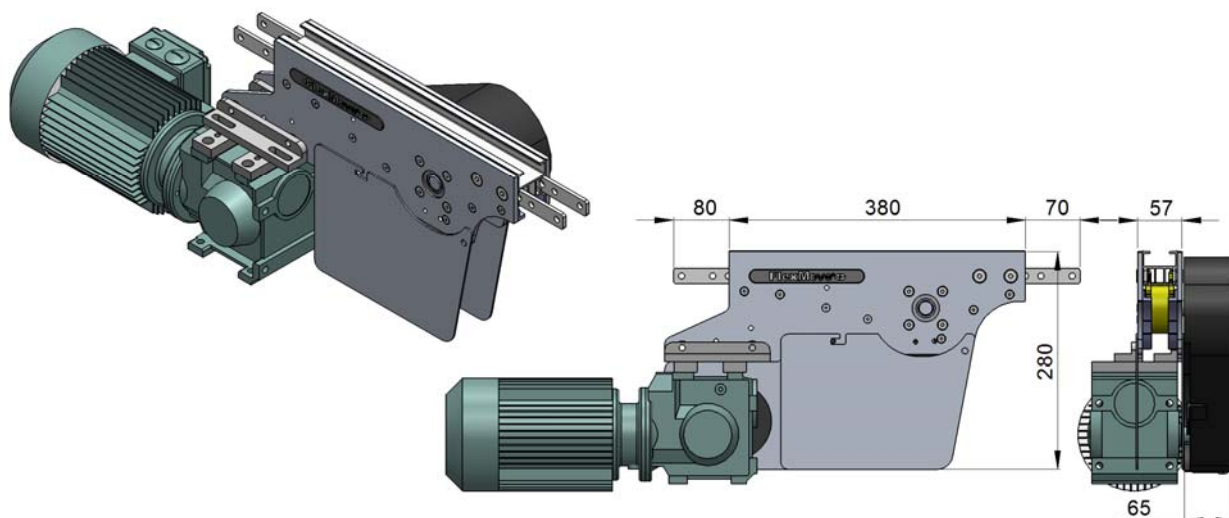
FK SERIES

FK Suspended Intermediate Drive with Motor (LEFT)
FKID-SD-0.25L1, 0.37L1, 0.55L1



FK Suspended Intermediate Drive without Motor (LEFT)
FKID-SD-0L1

FK



Max Traction Force : 200N

The Suspended Intermediate Drive Unit is with torque limiter. Standard attached gear motors are with SEW motor size 0.25kW, 0.37kW & 0.55kW. FKID-SD-0L represents suspended drive without gear motor. Maximum traction force for FKID-SD is lower than FKDD and FKSD.

UOM : pc

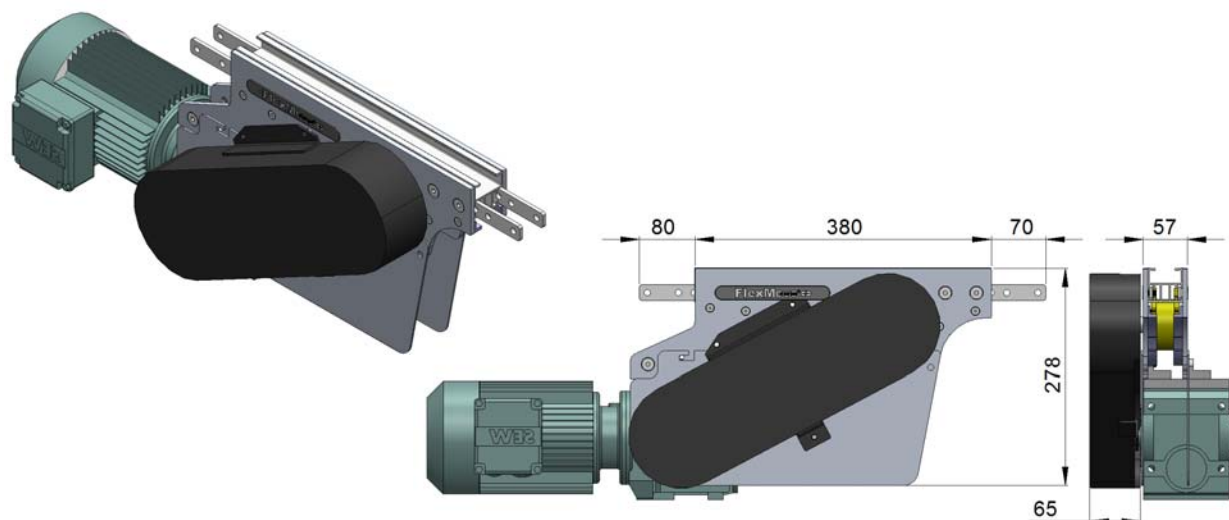
Chain required 2-way : 1.2 meter

Slide rail required 2-way: 1.1 meter

FK Suspended Intermediate Drive with Motor (RIGHT)
FKID-SD-0.25R1, 0.37R1, 0.55R1



FK Suspended Intermediate Drive without Motor (RIGHT)
FKID-SD-0R1



Max Traction Force : 200N

The Suspended Intermediate Drive Unit is with torque limiter. Standard attached gear motors are with SEW motor size 0.25kW, 0.37kW & 0.55kW. FKID-SD-0R represents suspended drive without gear motor. Maximum traction force for FKID-SD is lower than FKDD and FKSD.

UOM : pc

Chain required 2-way : 1.2 meter

Slide rail required 2-way: 1.1 meter

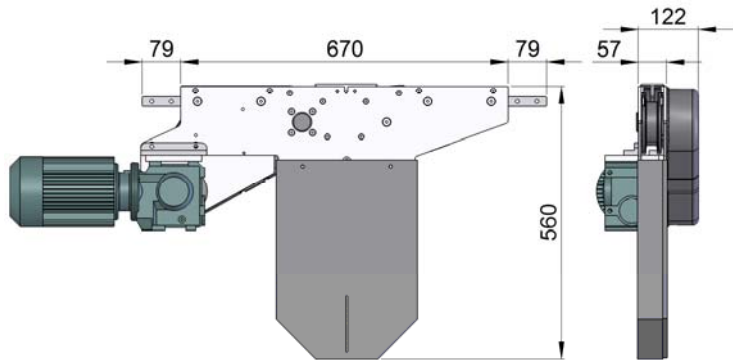
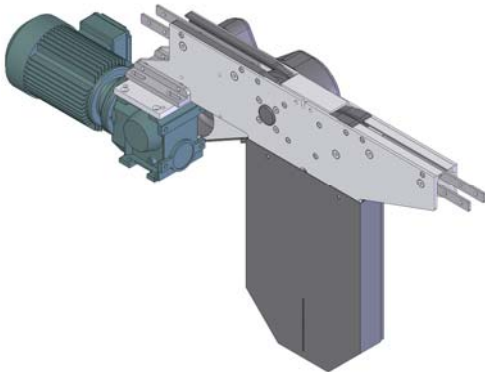
SEW gear motors are products of SEW Eurodrive.

FK SERIES

FK

FK Suspended Catenary Drive with Motor (LEFT)
FKCD-SD-0.25L, 0.37L, 0.55L

FK Suspended Catenary Drive without Motor (LEFT)
FKCD-SD-0L



Max Traction Force : 500N

The Suspended Catenary Drive Unit is with torque limiter. Standard attached gear motors are with SEW motor size 0.25kW, 0.37kW & 0.55kW. FKCD-SD-0L represents direct drive without gear motor.

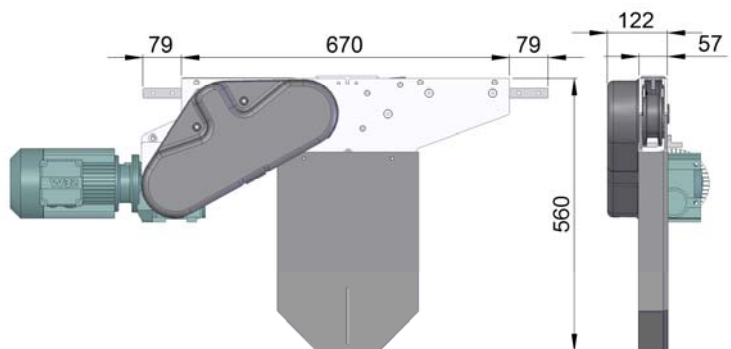
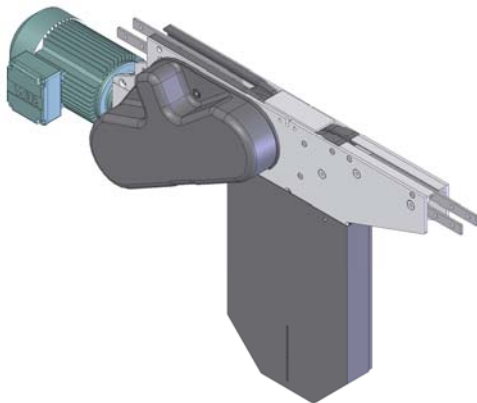
UOM : pc

Chain required 1-way : 1.4 meter

Slide rail required 1-way: 1.0 meter

FK Suspended Catenary Drive with Motor (RIGHT)
FKCD-SD-0.25R, 0.37R, 0.55R

FK Suspended Catenary Drive without Motor (RIGHT)
FKCD-SD-0R



Max Traction Force : 500N

The Suspended Catenary Drive Unit is with torque limiter. Standard attached gear motors are with SEW motor size 0.25kW, 0.37kW & 0.55kW. FKCD-SD-0R represents direct drive without gear motor.

UOM : pc

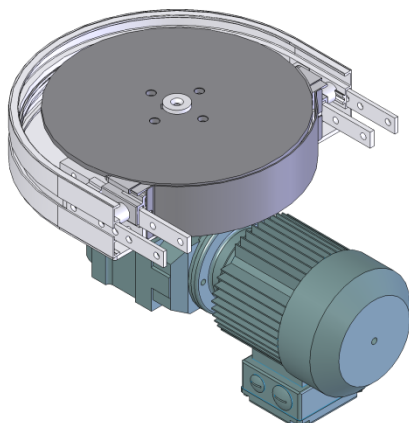
Chain required 1-way : 1.4 meter

Slide rail required 1-way: 1.0 meter

SEW gear motors are products of SEW Eurodrive.

FK SERIES

FK Direct Wheel Drive with Motor
FKWD-DD-0.25, 0.37, 0.55



Max Traction Force : 200N

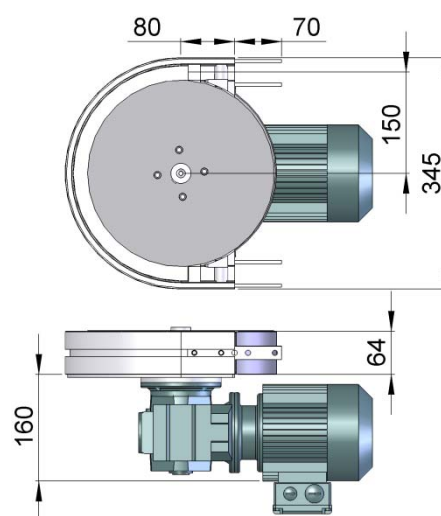
The Drive Wheel Drive Unit is without torque limiter. Standard attached gear motors are with SEW motor size 0.25kW, 0.37kW & 0.55kW. FKWD-DD-0M represents direct drive without gear motor. Maximum traction force for FKWD-DD is lower than FKDD and FKSD.

UOM : pc

Chain required 1-way : 0.7 meter

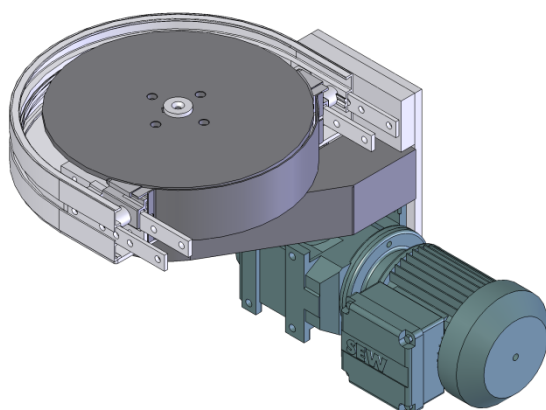
Slide rail required 1-way : 0.7 meter

FK Direct Wheel Drive without Motor
FKWD-DD-0M



FK

FK Suspended Wheel Drive with Motor
FKWSD-0.25, 0.37, 0.55



Max Traction Force : 200N

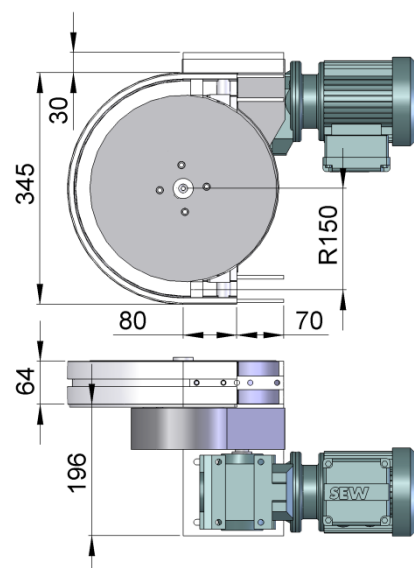
The Suspended Wheel Drive Unit is with torque limiter. Standard attached gear motors are with SEW motor size 0.25kW, 0.37kW & 0.55kW. FKWD-SD-0M represents direct drive without gear motor. Maximum traction force for FKWD-SD is lower than FKDD and FKSD.

UOM : pc

Chain required 1-way : 0.7 meter

Slide rail required 1-way : 0.7 meter

FK Suspended Wheel Drive without Motor
FKWD-SD-0M

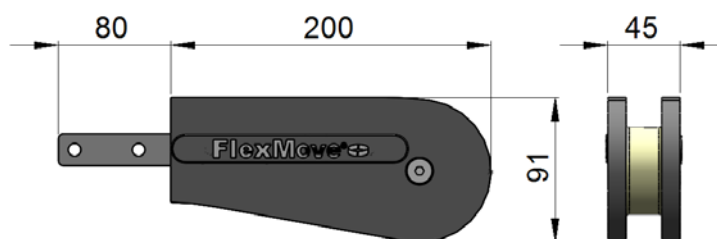


SEW gear motors are products of SEW Eurodrive.

FK SERIES

FK Idler End-200

FKIE-200



FK

UOM : pc

Chain required 2-way : 0.8 meter

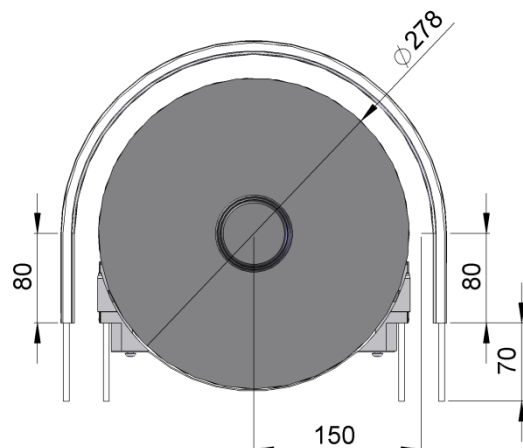
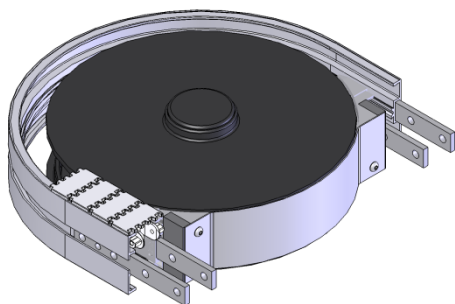
Slide rail required 2-way: 0

FK SERIES

FK

FK Wheel Bend 180°

FKWB-180R150A



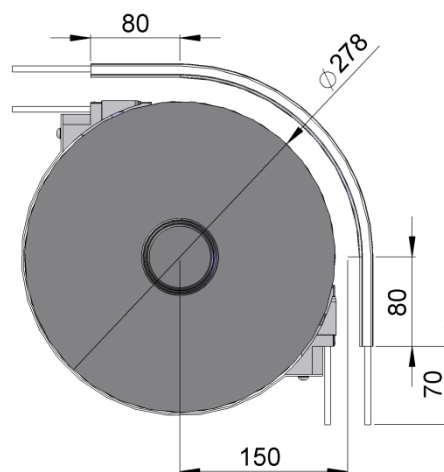
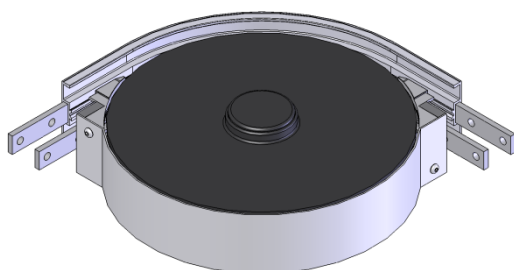
UOM : pc

Chain required 2-way : 0.9 meter

Slide rail required 2-way: 1.0 meter

FK Wheel Bend 90°

FKWB-90R150A



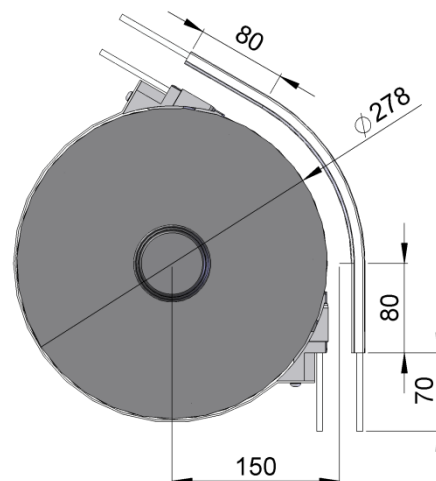
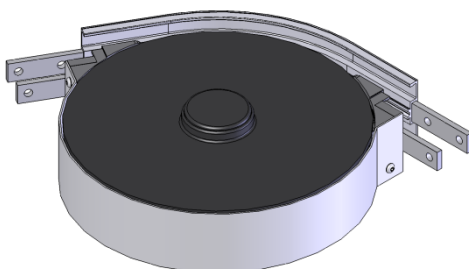
UOM : pc

Chain required 2-way : 0.8 meter

Slide rail required 2-way: 0.6 meter

FK Wheel Bend 60°

FKWB-60R150A



UOM : pc

Chain required 2-way : 0.5 meter

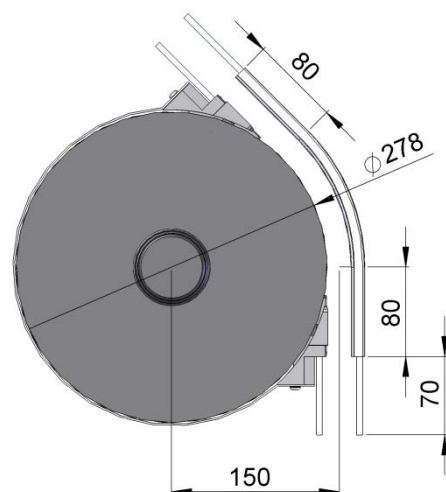
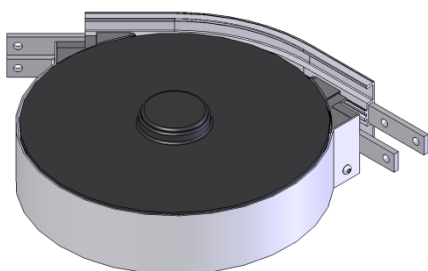
Slide rail required 2-way: 0.7 meter

FK SERIES

FK

FK Wheel Bend 45°

FKWB-45R150A



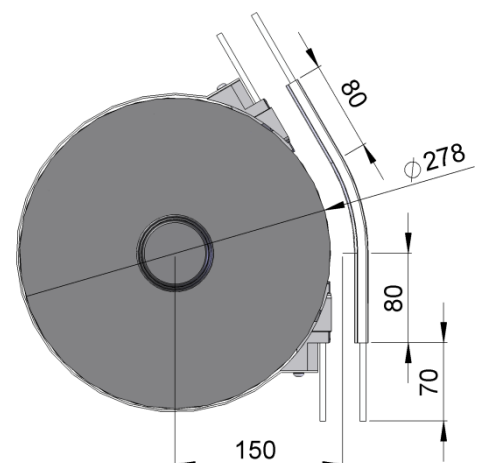
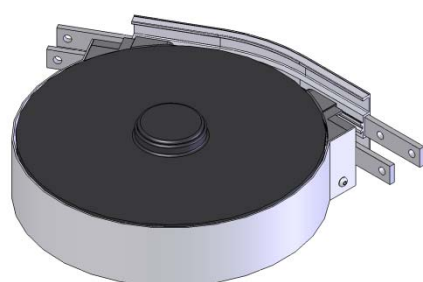
UOM : pc

Chain required 2-way : 0.5 meter

Slide rail required 2-way: 0.6 meter

FK Wheel Bend 30°

FKWB-30R150A



UOM : pc

Chain required 2-way : 0.4 meter

Slide rail required 2-way: 0.6 meter

FK Wheel Bend 5° - 180°

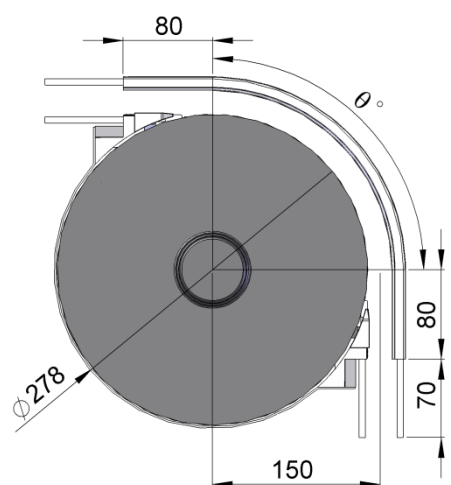
Example for FK Wheel Bend Ordering

Wheel bend, $\Theta^\circ \pm 1^\circ$

FKWB- Θ° R150A

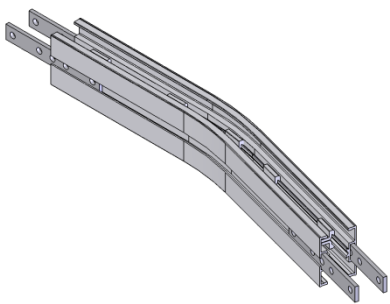
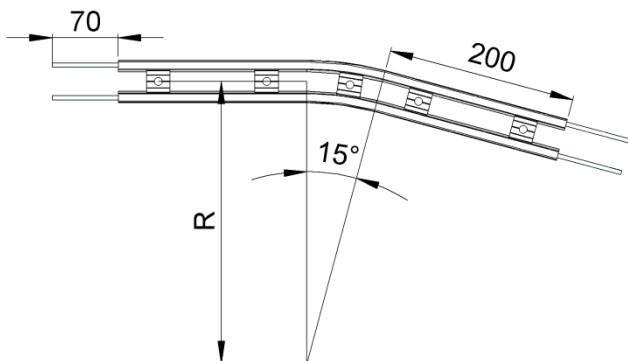
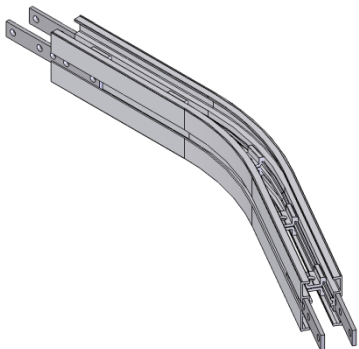
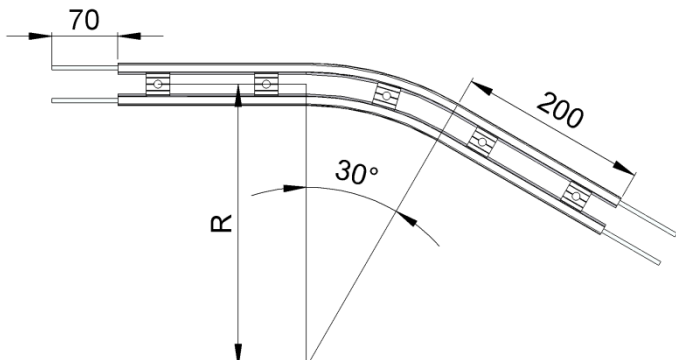
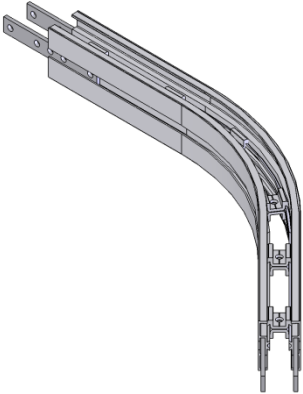
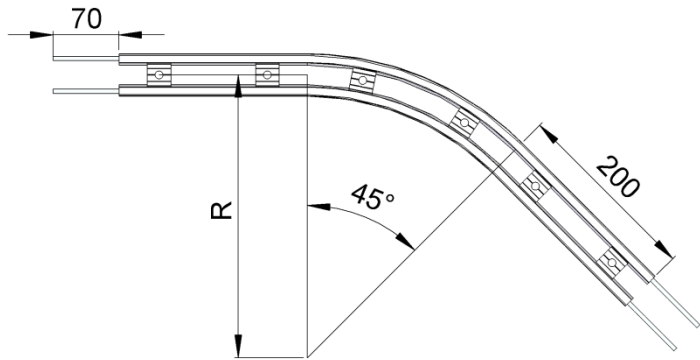
If an angle of 65° is needed for wheel bend, so the ordering part number is

FKWB-65R150A

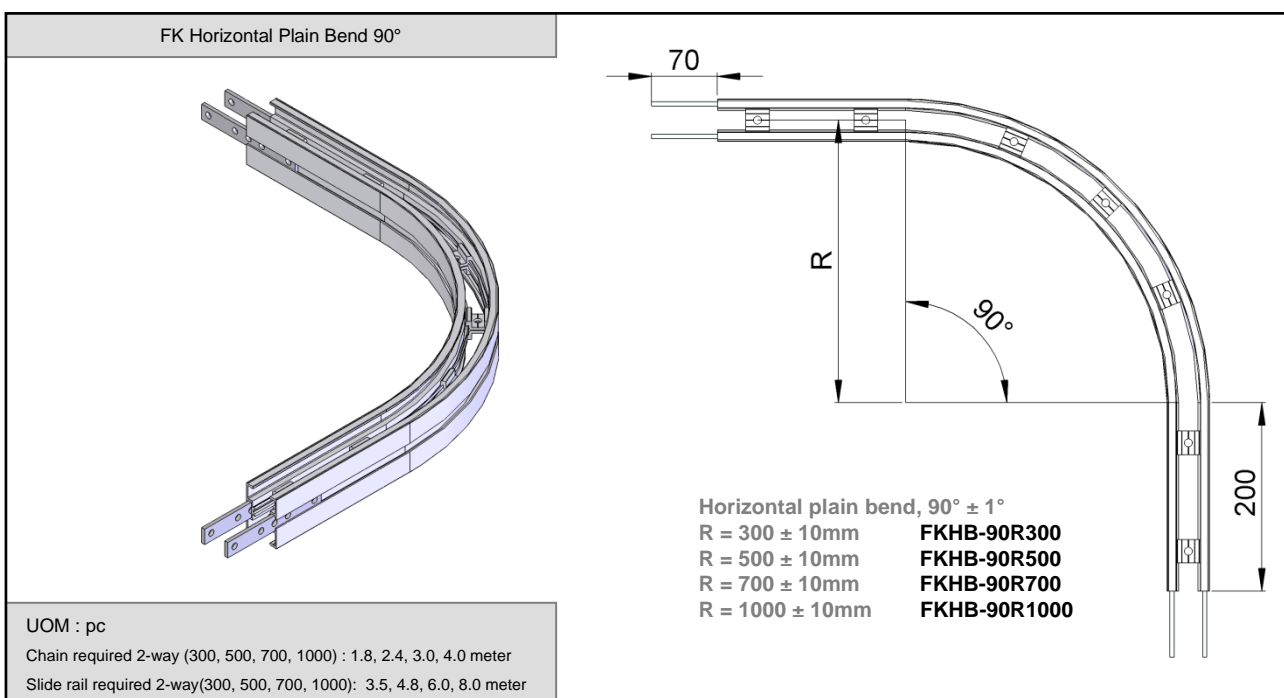
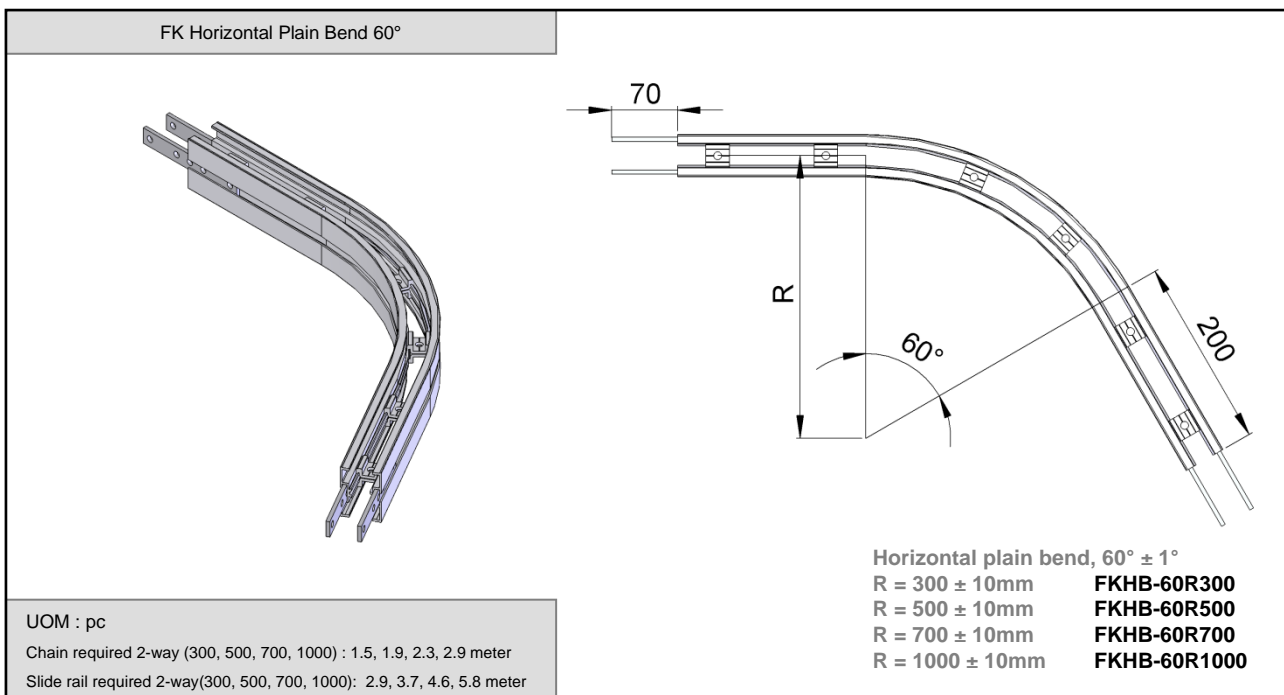


The outer bend is assembled using connecting strip (FACS-20x140) .Angle of Θ° must be indicated when ordering.

FK SERIES

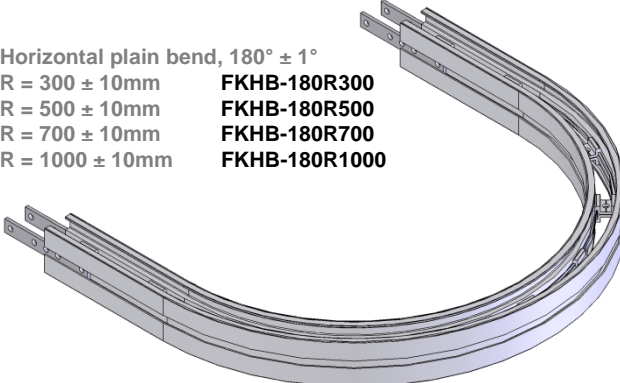
<p>FK Horizontal Plain Bend 15°</p>	<div data-bbox="1457 349 1522 394">FK</div>   <p>Horizontal plain bend, 15° ± 1°</p> <table> <tr> <td>R = 300 ± 10mm</td> <td>FKHB-15R300</td> </tr> <tr> <td>R = 500 ± 10mm</td> <td>FKHB-15R500</td> </tr> <tr> <td>R = 700 ± 10mm</td> <td>FKHB-15R700</td> </tr> <tr> <td>R = 1000 ± 10mm</td> <td>FKHB-15R1000</td> </tr> </table>	R = 300 ± 10mm	FKHB-15R300	R = 500 ± 10mm	FKHB-15R500	R = 700 ± 10mm	FKHB-15R700	R = 1000 ± 10mm	FKHB-15R1000
R = 300 ± 10mm	FKHB-15R300								
R = 500 ± 10mm	FKHB-15R500								
R = 700 ± 10mm	FKHB-15R700								
R = 1000 ± 10mm	FKHB-15R1000								
<p>UOM : pc Chain required 2-way (300, 500, 700, 1000) : 1, 1.1, 1.2, 1.4 meter Slide rail required 2-way(300, 500, 700, 1000): 2, 2.2, 2.4, 2.8 meter</p>									
<p>FK Horizontal Plain Bend 30°</p>	  <p>Horizontal plain bend, 30° ± 1°</p> <table> <tr> <td>R = 300 ± 10mm</td> <td>FKHB-30R300</td> </tr> <tr> <td>R = 500 ± 10mm</td> <td>FKHB-30R500</td> </tr> <tr> <td>R = 700 ± 10mm</td> <td>FKHB-30R700</td> </tr> <tr> <td>R = 1000 ± 10mm</td> <td>FKHB-30R1000</td> </tr> </table>	R = 300 ± 10mm	FKHB-30R300	R = 500 ± 10mm	FKHB-30R500	R = 700 ± 10mm	FKHB-30R700	R = 1000 ± 10mm	FKHB-30R1000
R = 300 ± 10mm	FKHB-30R300								
R = 500 ± 10mm	FKHB-30R500								
R = 700 ± 10mm	FKHB-30R700								
R = 1000 ± 10mm	FKHB-30R1000								
<p>UOM : pc Chain required 2-way (300, 500, 700, 1000) : 1.2, 1.4, 1.6, 1.9 meter Slide rail required 2-way(300, 500, 700, 1000): 2.4, 2.8, 3.2, 3.8 meter</p>									
<p>FK Horizontal Plain Bend 45°</p>	  <p>Horizontal plain bend, 45° ± 1°</p> <table> <tr> <td>R = 300 ± 10mm</td> <td>FKHB-45R300</td> </tr> <tr> <td>R = 500 ± 10mm</td> <td>FKHB-45R500</td> </tr> <tr> <td>R = 700 ± 10mm</td> <td>FKHB-45R700</td> </tr> <tr> <td>R = 1000 ± 10mm</td> <td>FKHB-45R1000</td> </tr> </table>	R = 300 ± 10mm	FKHB-45R300	R = 500 ± 10mm	FKHB-45R500	R = 700 ± 10mm	FKHB-45R700	R = 1000 ± 10mm	FKHB-45R1000
R = 300 ± 10mm	FKHB-45R300								
R = 500 ± 10mm	FKHB-45R500								
R = 700 ± 10mm	FKHB-45R700								
R = 1000 ± 10mm	FKHB-45R1000								
<p>UOM : pc Chain required 2-way (300, 500, 700, 1000) : 1.3, 1.6, 1.9, 2.4 meter Slide rail required 2-way(300, 500, 700, 1000): 2.5, 2.9, 3.3, 3.9 meter</p>									

FK SERIES



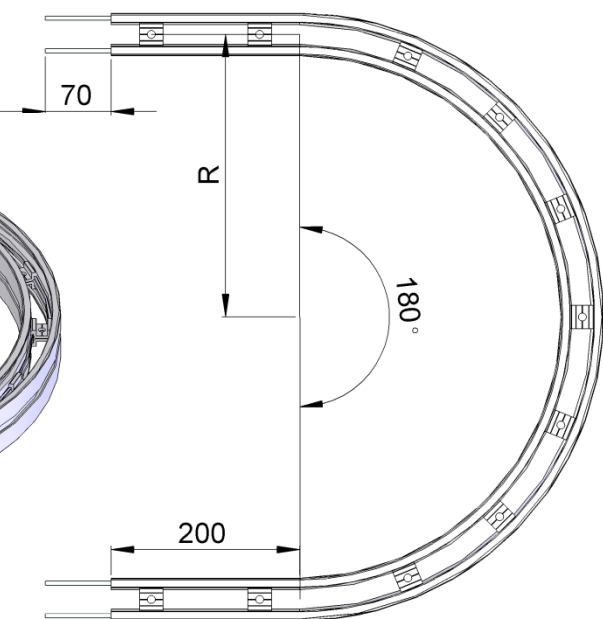
FK SERIES

FK Horizontal Plain Bend 180°



Horizontal plain bend, $180^\circ \pm 1^\circ$
 $R = 300 \pm 10\text{mm}$ **FKHB-180R300**
 $R = 500 \pm 10\text{mm}$ **FKHB-180R500**
 $R = 700 \pm 10\text{mm}$ **FKHB-180R700**
 $R = 1000 \pm 10\text{mm}$ **FKHB-180R1000**

UOM : pc
 Chain required 2-way (300, 500, 700, 1000) : 2.7, 4.0, 5.2, 7.1 meter
 Slide rail required 2-way(300, 500, 700, 1000): 5.4, 7.9, 1.1, 14.2 meter



FK Horizontal Plain Bend 5-180°

Example for FK Horizontal Plain Bend Ordering

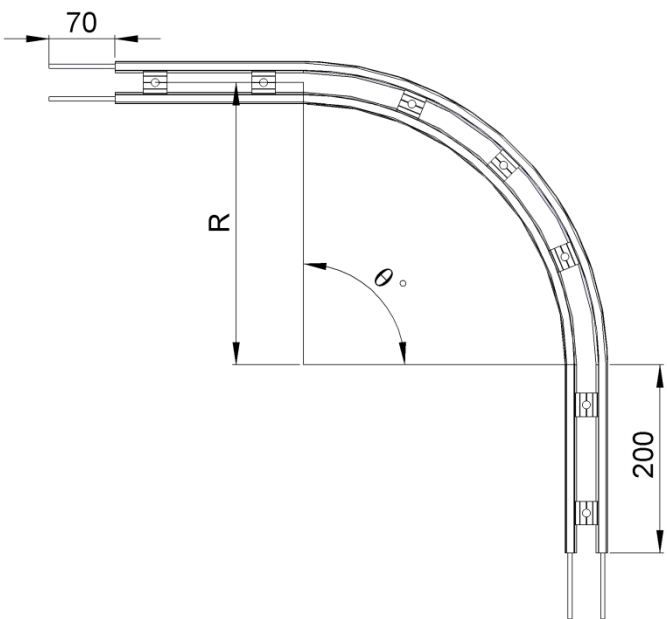
Horizontal plain bend, $\Theta^\circ \pm 1^\circ$

$R = 300 \pm 10\text{mm}$ **FKHB- Θ° R300**
 $R = 500 \pm 10\text{mm}$ **FKHB- Θ° R500**
 $R = 700 \pm 10\text{mm}$ **FKHB- Θ° R700**
 $R = 1000 \pm 10\text{mm}$ **FKHB- Θ° R1000**

If an angle of 120° is needed for radius R500 horizontal plain bend, so the ordering part number is

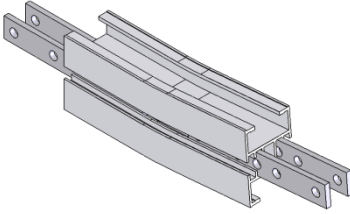
FKHB-120R500

UOM : pc
 Chain required 2-way (300, 500, 700, 1000) : meter (variable to angle)
 Slide rail required 2-way(300, 500, 700, 1000): meter (variable to angle)

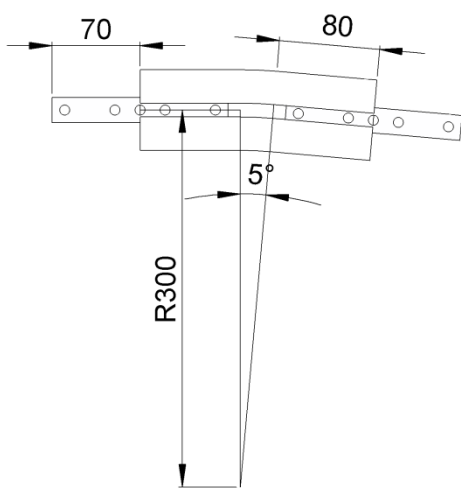


FK SERIES

FK Vertical Bend 5°
FKVB-5R300

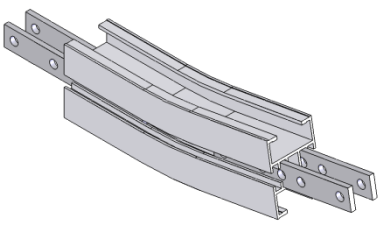


UOM : pc
Chain required 2-way : 0.4 meter
Slide rail required 2-way: 0.8 meter

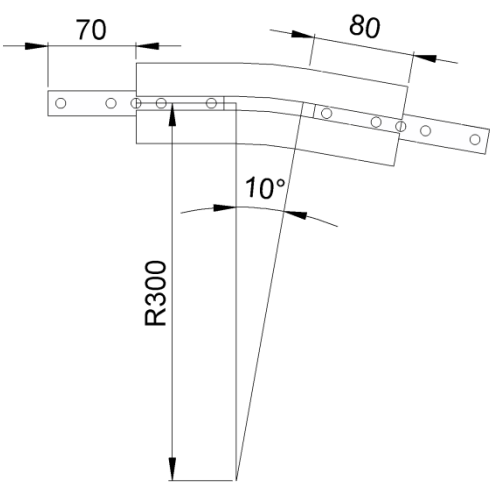


FK

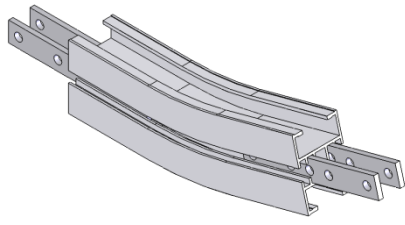
FK Vertical Bend 10°
FKVB-10R300



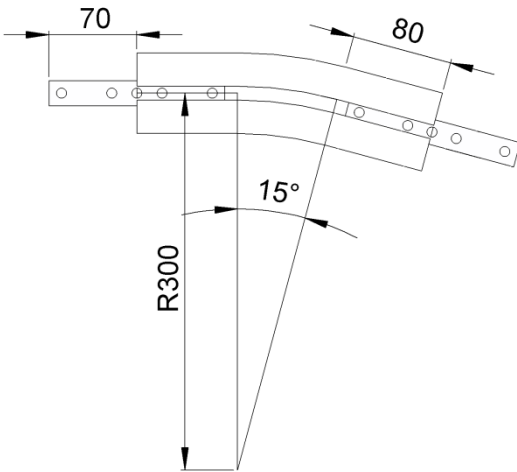
UOM : pc
Chain required 2-way : 0.5 meter
Slide rail required 2-way: 0.9 meter



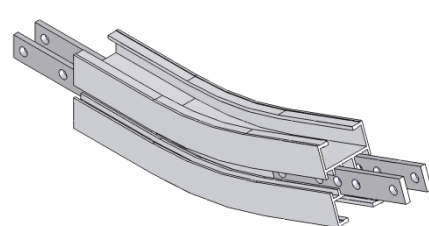
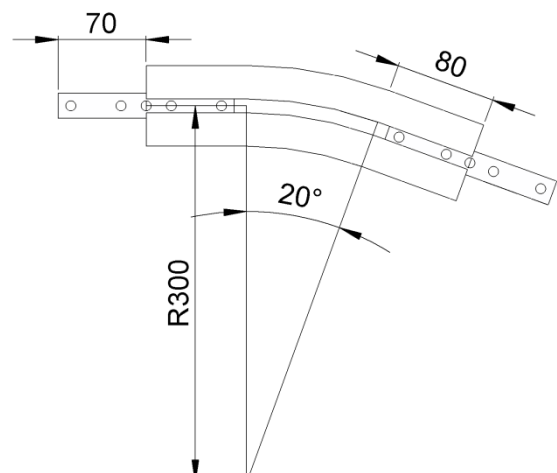
FK Vertical Bend 15°
FKVB-15R300

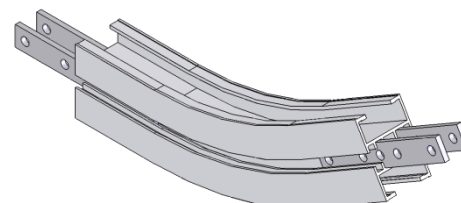
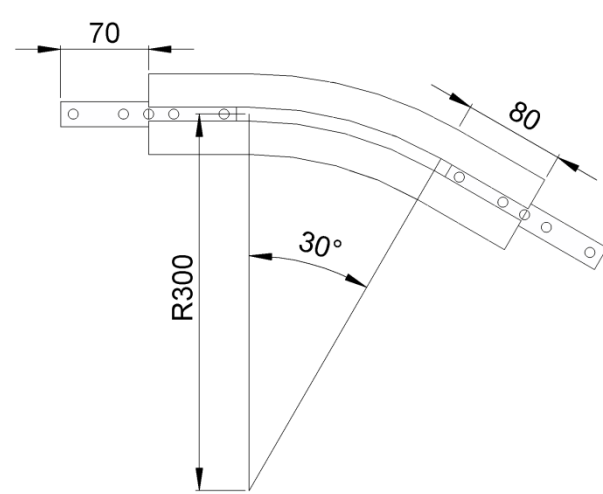


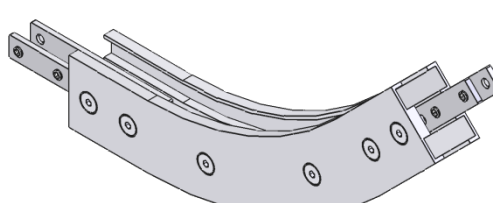
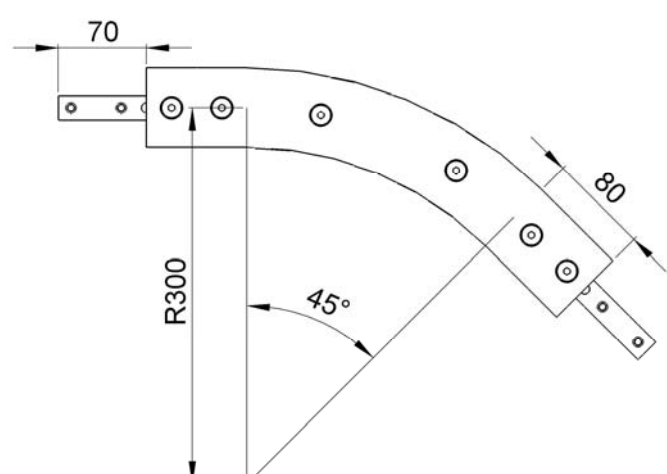
UOM : pc
Chain required 2-way : 0.5 meter
Slide rail required 2-way: 1.0 meter



FK SERIES

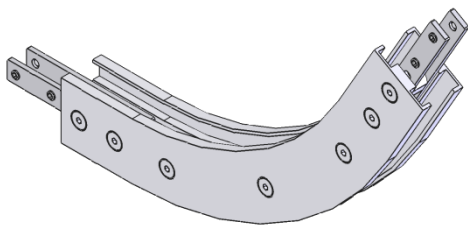
<p>FK Vertical Bend 20° FKVB-20R300</p>	 	FK
<p>UOM : pc Chain required 2-way : 0.6 meter Slide rail required 2-way: 1.1 meter</p>		

<p>FK Vertical Bend 30° FKVB-30R300</p>	 	
<p>UOM : pc Chain required 2-way : 0.7 meter Slide rail required 2-way: 1.3 meter</p>		

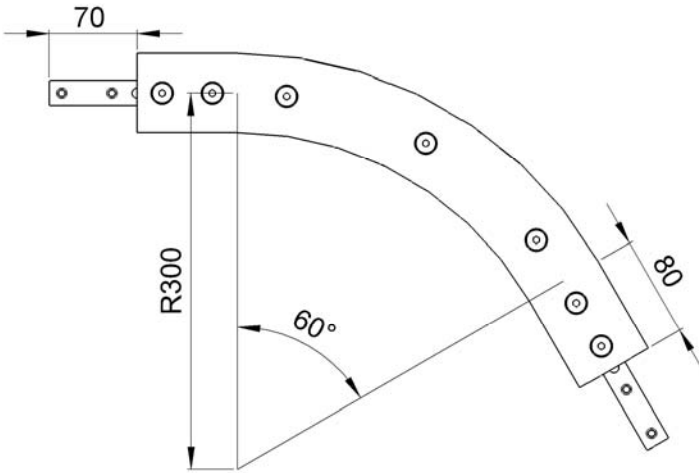
<p>FK Vertical Bend 45° FKVB-45R300</p>	 	
<p>UOM : pc Chain required 2-way : 0.8 meter Slide rail required 2-way: 1.6 meter</p>		

FK SERIES

FK Vertical Bend 60°
FKVB-60R300

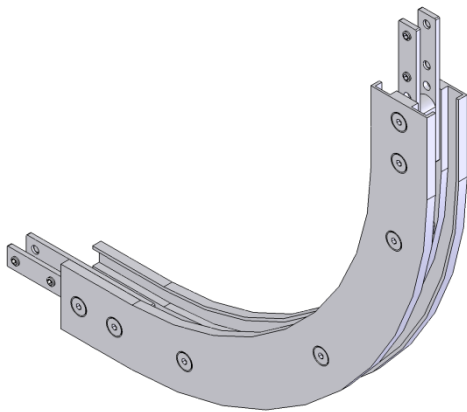


UOM : pc
Chain required 2-way : 1.0 meter
Slide rail required 2-way: 1.9 meter

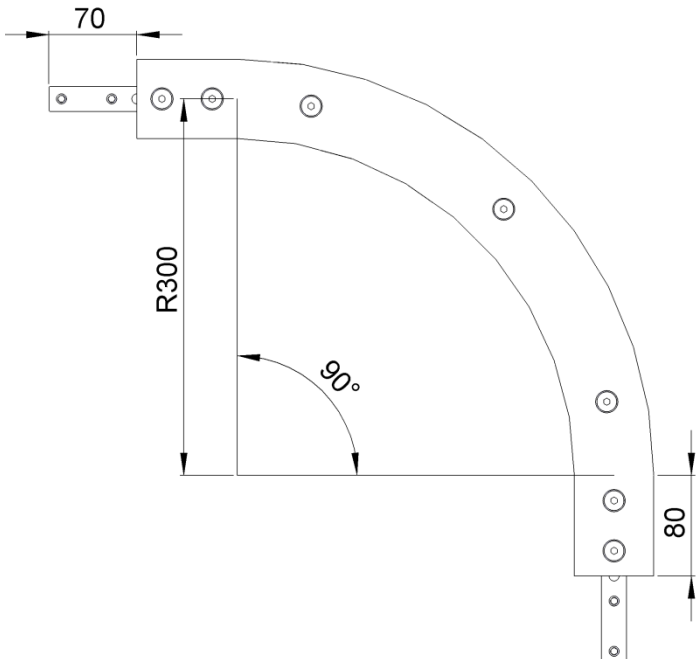


FK

FK Vertical Bend 90°
FKVB-90R300



UOM : pc
Chain required 2-way : 1.3 meter
Slide rail required 2-way: 2.6 meter



FK SERIES

FK Vertical Bend 5° - 90°

Example for FK Vertical Bend Ordering

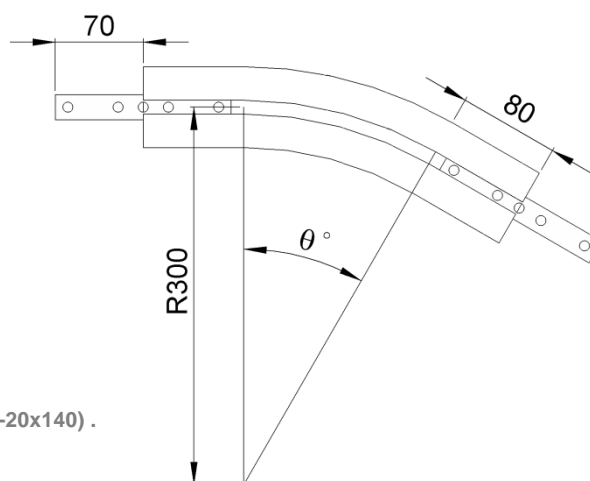
Vertical bend, $\theta^\circ \pm 1^\circ$

FKVB- θ° R300

If an angle of 65° is needed for vertical bend, so the ordering part number is

FKVB-65R300

The outer bend is assembled using connecting strip (FACS-20x140). Angle of θ° must be indicated when ordering.



FK