

FL SERIES

Variety of chain type suitable for wide range of applications either horizontal or vertically product transportation. Capacity higher than FK, FS, FM. The maximum product width to be conveyed can be referred to guide rail assembly pages.

FL Series Characteristic

Beam Width: 150mm

Product Width: Refer to Guide Rail Assembly

Accessories Needed

Slide Rail Required: FASR-25 OR FASR-25U

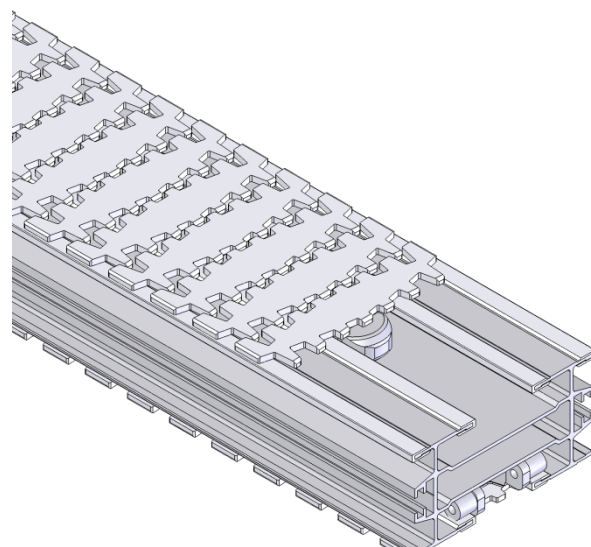
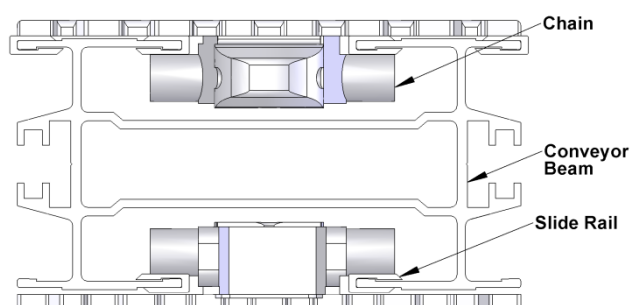
Slide Rail Colour: WHITE OR NATURAL COLOUR

Slide Rail Material: HDPE OR UHMW

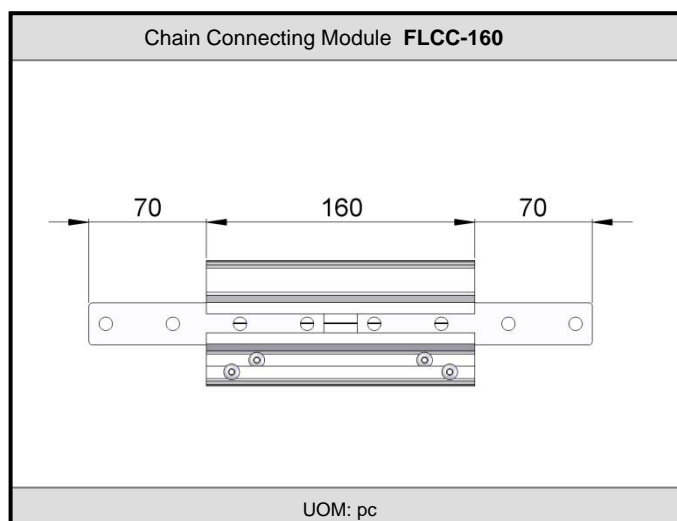
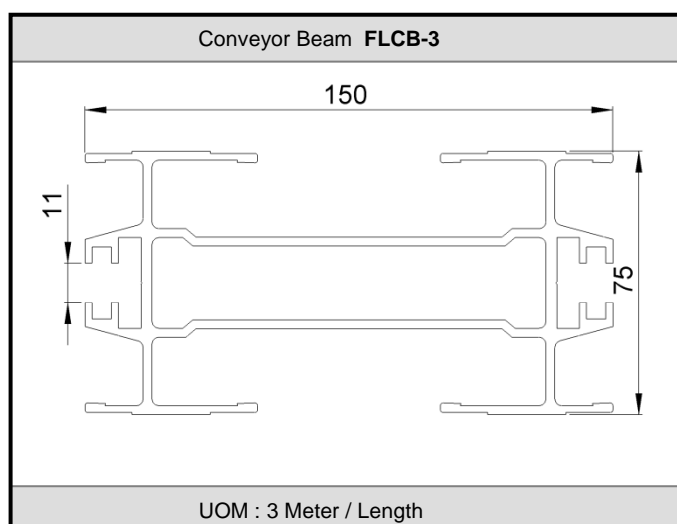
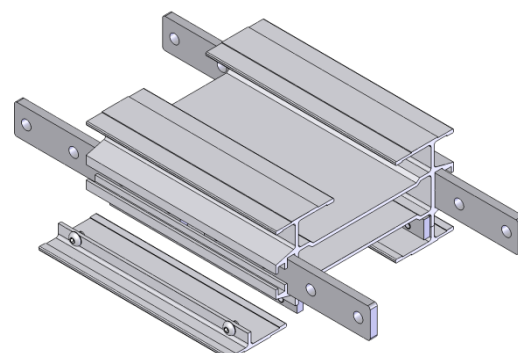
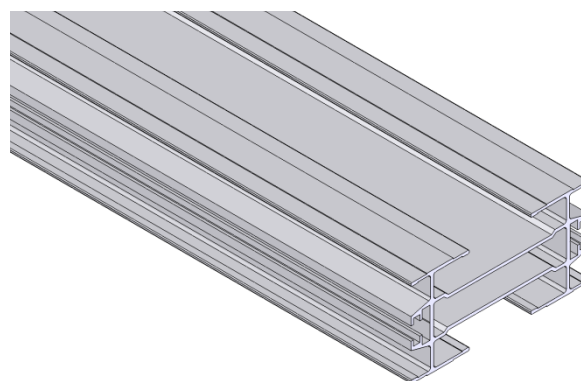
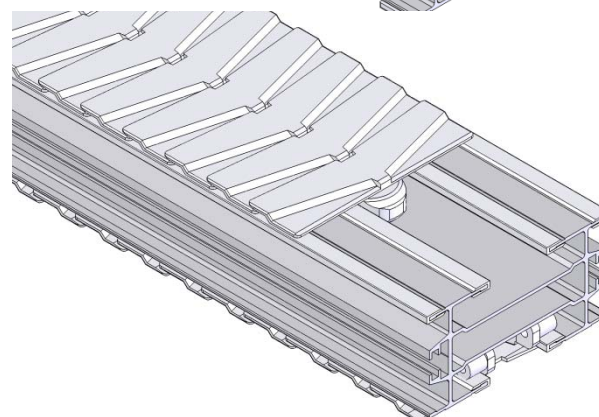
Slide Rail Rivet & Screw: FASLR-4X6 or FASLS-M5

Connecting strip is used to connect 2 beams.

Connecting Strip: FACS-25x140A



FL



FL SERIES

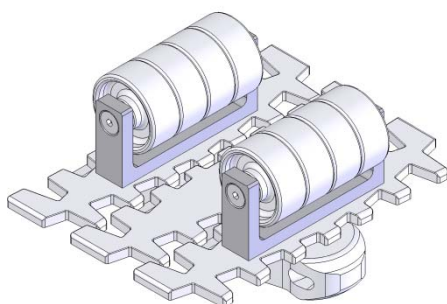
Chain Common Data

Packaging: 5m per box
Pitch: 35.5mm
Width: 150mm
Tensile Strength at 20°C: 6000N
Colour: White & Black (Conductive)

Material : -
Chain: White Acetal / POM
Pivot: Polyamide
Pivot Pin : Stainless Steel
Insert (Wedge & Friction): TPE Grey

Example for FLRC-5B-L#

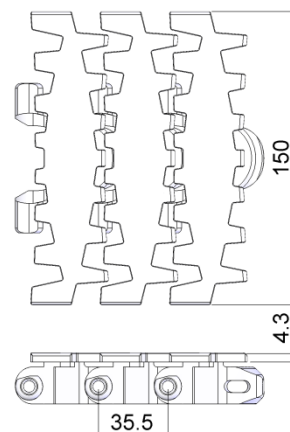
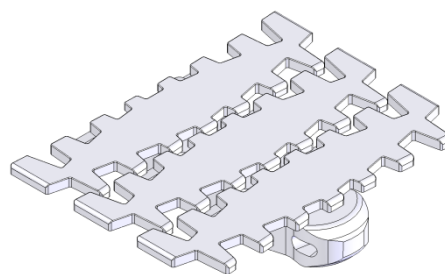
= 1 cleated top chain with alternate of



The above chain is FLRC-5B-L1, 1 link cleated top chain with alternate of 1 link of plain chain.

Note: # = 1, 2, 3, 4, 5.....20

Standard Plain Chain FLPC-5

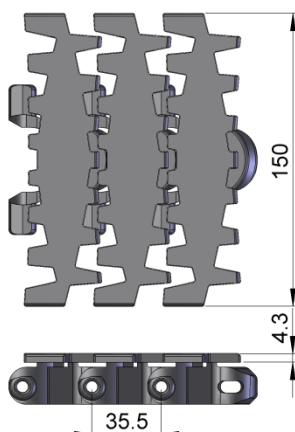
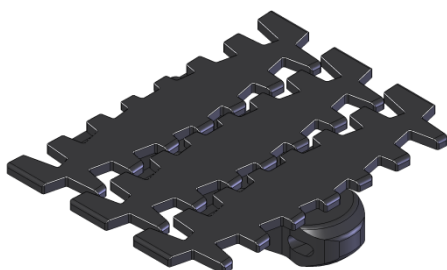


UOM: 5 Meter / box

Application: Suitable for horizontal and slope < 5° transport of products with accumulation.

FL

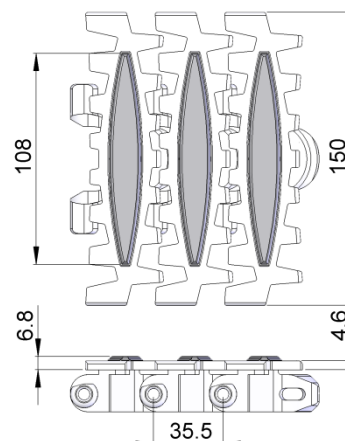
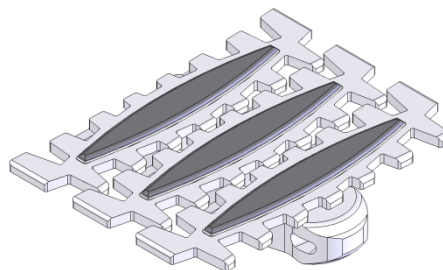
Conductive Chain FLPC-5CD



UOM: 5 Meter / box

Application: Suitable for transport of static sensitive product.

Friction Top Chain FLFT-5

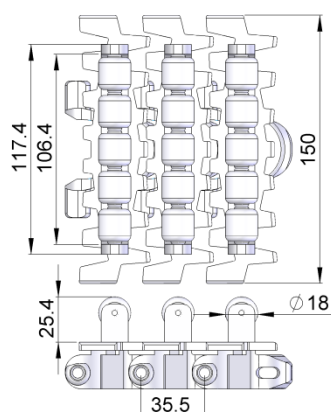
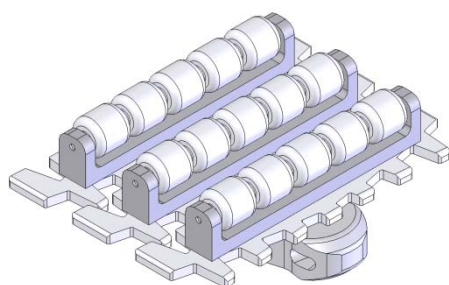


UOM: 5 Meter / box

Application: Suitable for transport product in slope > 5° but <= 30° without accumulation.

FL SERIES

Roller Top Chain FLRT-5

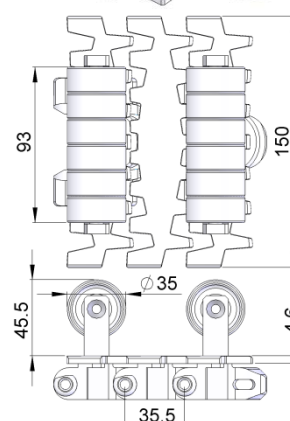
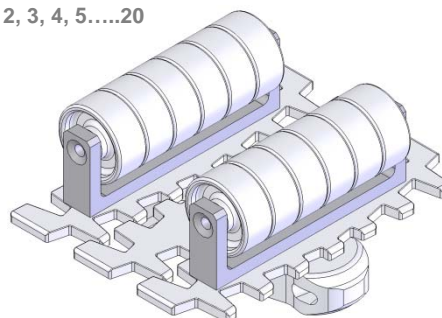


UOM: 5 Meter / box

Application: Suitable for accumulation of product with low friction and pressure.

Roller Cleat Chain FLRC-5A-L#

= 1, 2, 3, 4, 5.....20



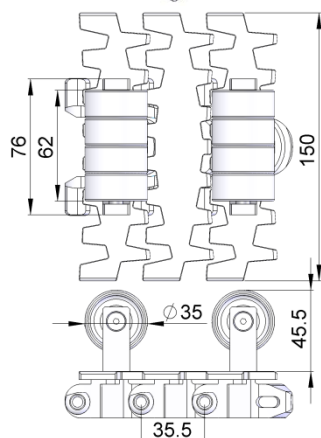
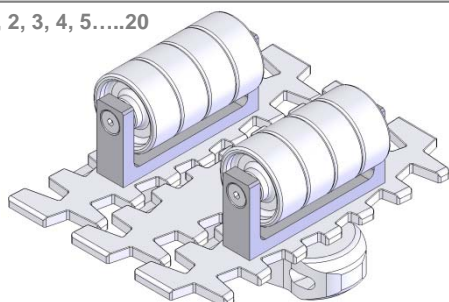
UOM: 5 Meter / box

Application: Suitable for vertical transportation of product in slope with no accumulation.

FL

Roller Cleat Chain FLRC-5B-L#

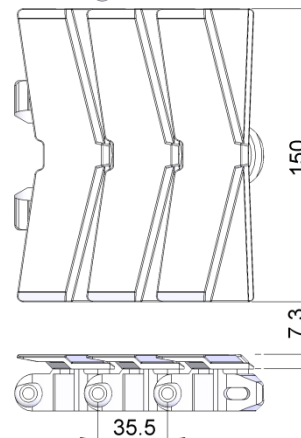
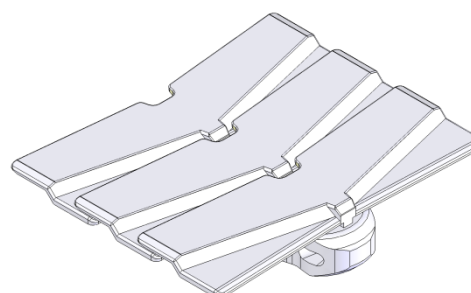
= 1, 2, 3, 4, 5.....20



UOM: 5 Meter / box

Application: Suitable for vertical transportation of product in slope with no accumulation.

Standard Plain Chain-V FLPC-5V

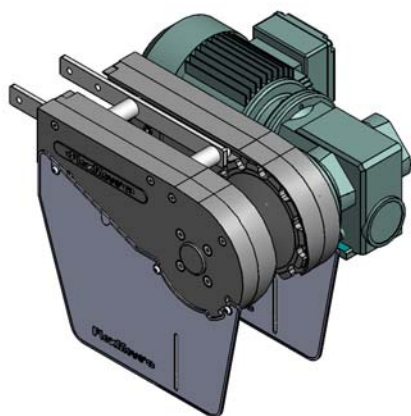


UOM: 5 METER/BOX

Application: (Safety Chain) Suitable for horizontal and slope < 5° transport of products with accumulation.

FL SERIES

FL Direct End Drive with Motor (LEFT)
FLDD-0.25L1, 0.37L1, 0.55L1



Max Traction Force : 1250N

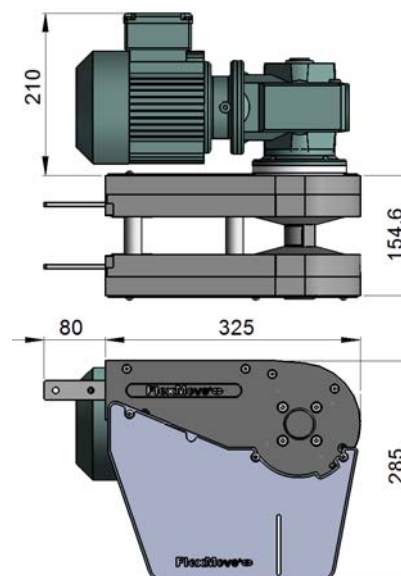
The Direct End Drive Unit is without torque limiter. Standard attached gear motors are with SEW motor size 0.25kW, 0.37kW & 0.55kW. FLDD-0L represents direct drive without gear motor. Multi channel drives are available upon request.

UOM : pc

Chain required 2-way : 0.8 meter

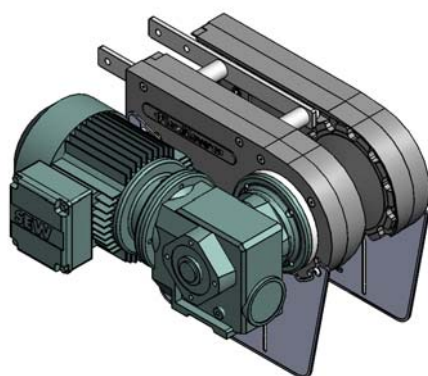
Slide rail required 2-way: 0.5 meter

FL Direct End Drive without Motor (LEFT)
FLDD-0L1



FL

FL Direct End Drive with Motor (RIGHT)
FLDD-0.25R1, 0.37R1, 0.55R1



Max Traction Force : 1250N

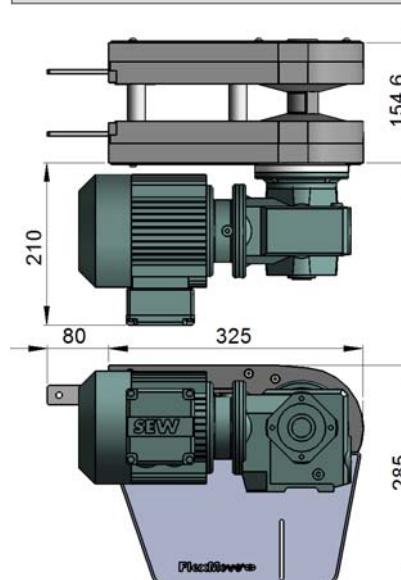
The Direct End Drive Unit is without torque limiter. Standard attached gear motors are with SEW motor size 0.25kW, 0.37kW & 0.55kW. FLDD-0R represents direct drive without gear motor. Multi channel drives are available upon request.

UOM : pc

Chain required 2-way : 0.8 meter

Slide rail required 2-way: 0.5 meter

FL Direct End Drive without Motor (RIGHT)
FLDD-0R1



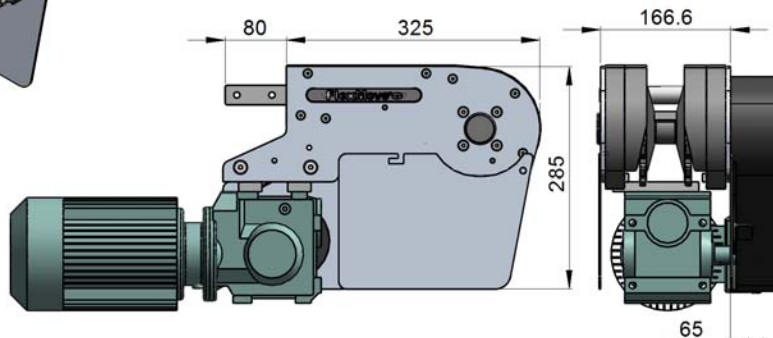
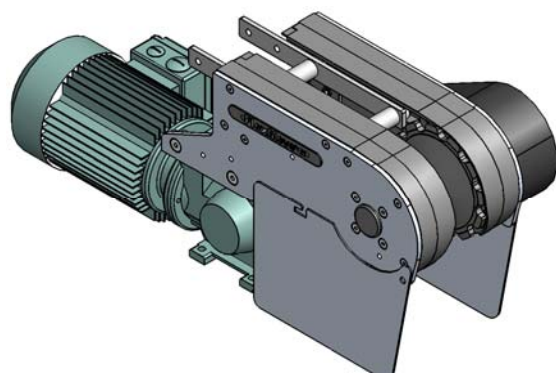
SEW gear motors are products of SEW Eurodrive.

FL SERIES

FL Suspended End Drive with Motor (LEFT)
FLSD-0.25L1, 0.37L1, 0.55L1



FL Suspended End Drive without Motor (LEFT)
FLSD-0L1



FL

Max Traction Force : 1250N

The Suspended End Drive Unit is with torque limiter. Standard attached gear motors are with SEW motor size 0.25kW, 0.37kW & 0.55kW. FLSD-0L represents suspended drive without gear motor.

UOM : pc

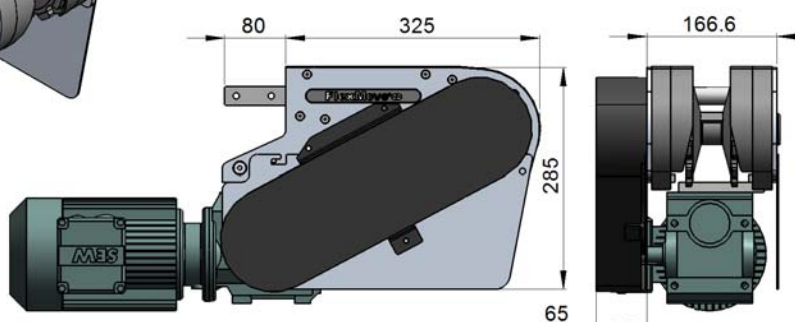
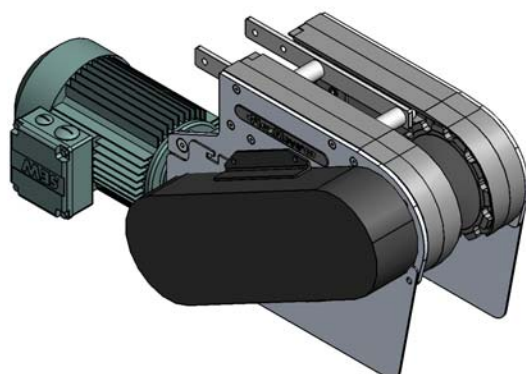
Chain required 2-way : 0.8 meter

Slide rail required 2-way: 0.5 meter

FL Suspended End Drive with Motor (RIGHT)
FLSD-0.25R1, 0.37R1, 0.55R1



FL Suspended End Drive without Motor (RIGHT)
FLSD-0R1



Max Traction Force : 1250N

The Suspended End Drive Unit is with torque limiter. Standard attached gear motors are with SEW motor size 0.25kW, 0.37kW & 0.55kW. FLSD-0R represents suspended drive without gear motor.

UOM : pc

Chain required 2-way : 0.8 meter

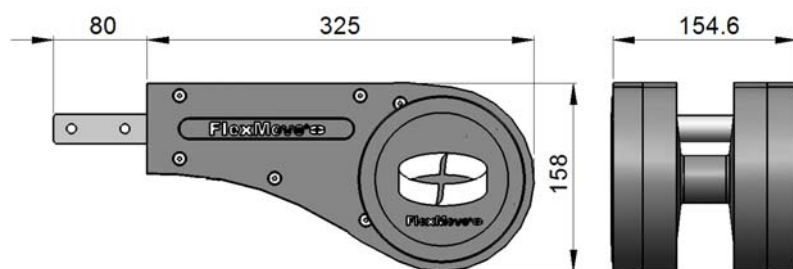
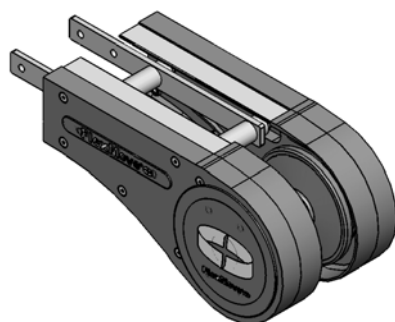
Slide rail required 2-way: 0.5 meter

SEW gear motors are products of SEW Eurodrive.

FL SERIES

FL Idler End-325

FLIE-325



FL

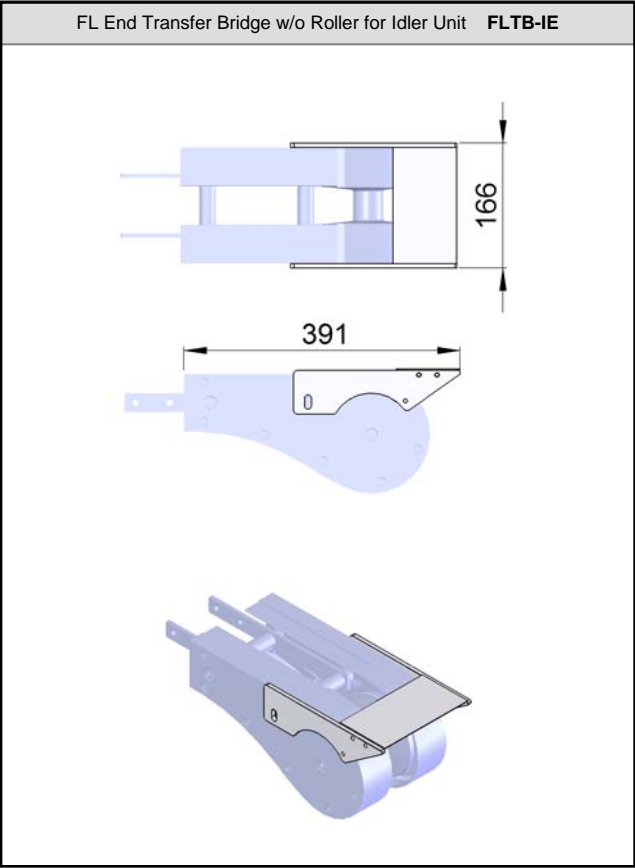
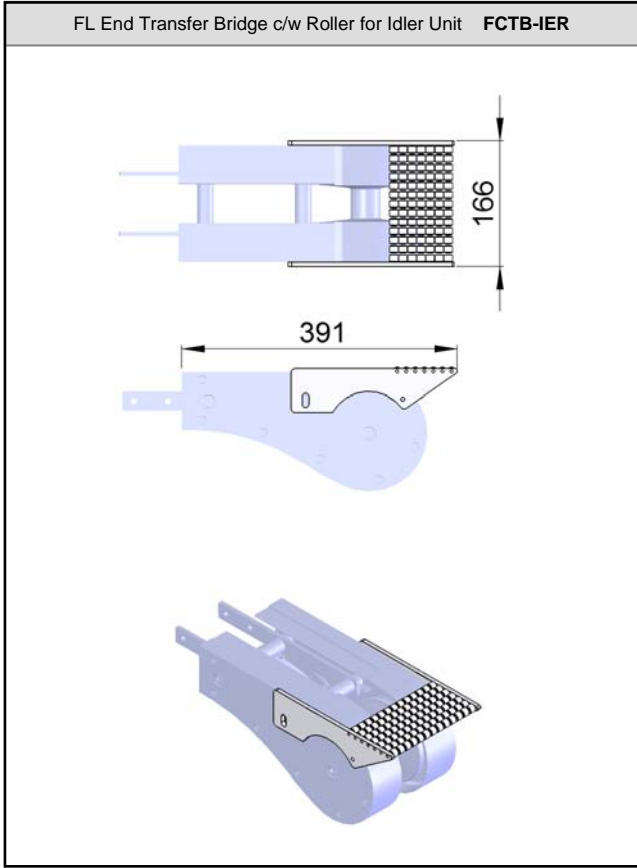
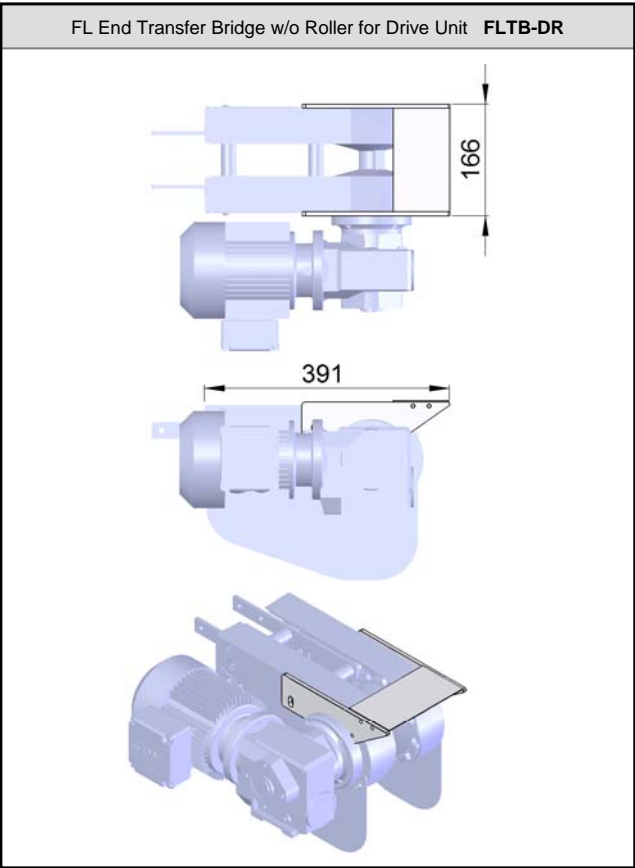
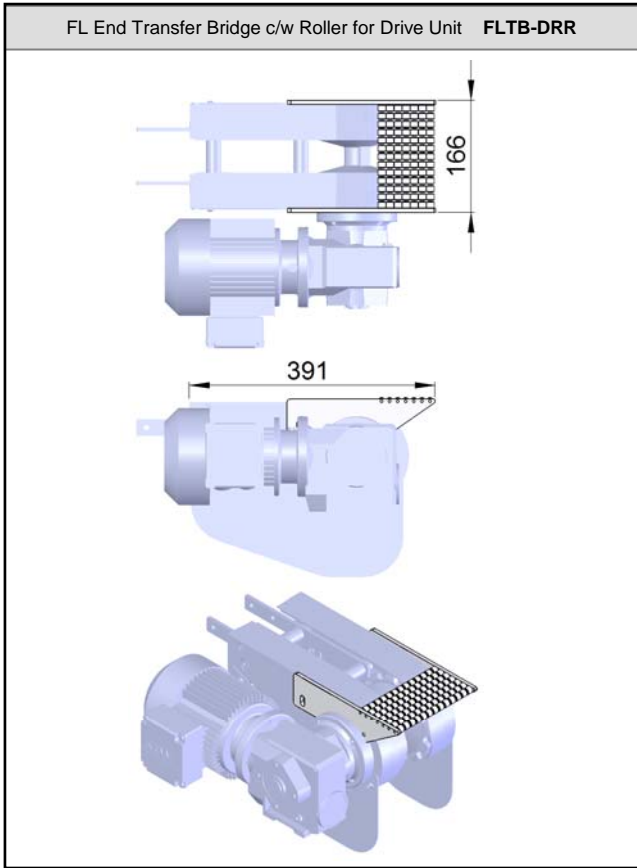
UOM : pc

Chain required 2-way : 0.8 meter

Slide rail required 2-way: 0.5 meter

FL SERIES

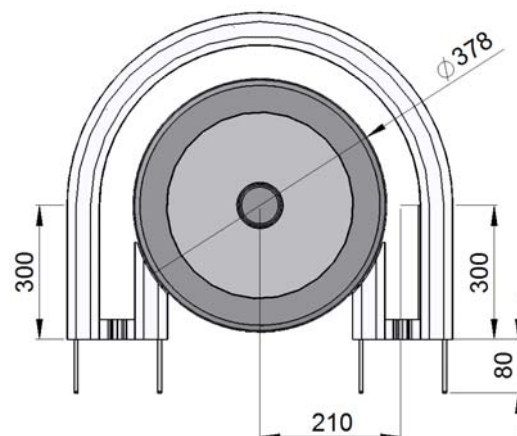
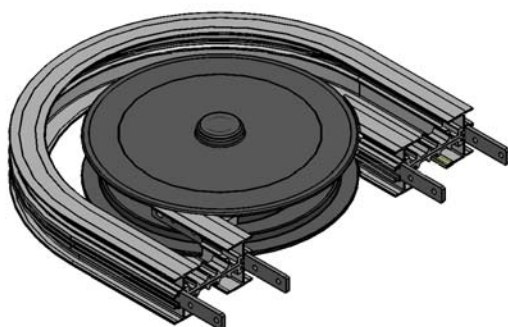
FL



FL SERIES

FL Wheel Bend 180°

FLWB-180R210



UOM : pc

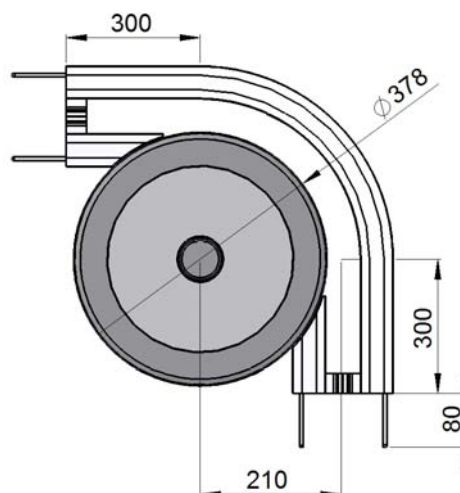
Chain required 2-way : 2.2 meter

Slide rail required 2-way: 4.2 meter

FL

FL Wheel Bend 90°

FLWB-90R210



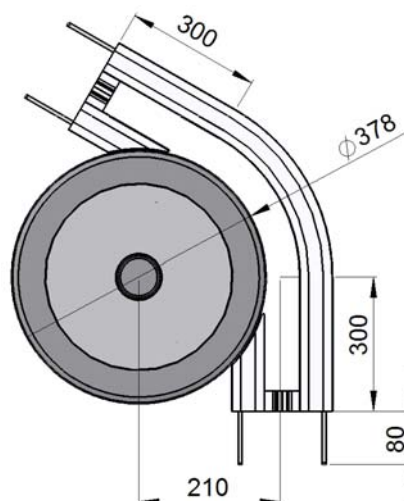
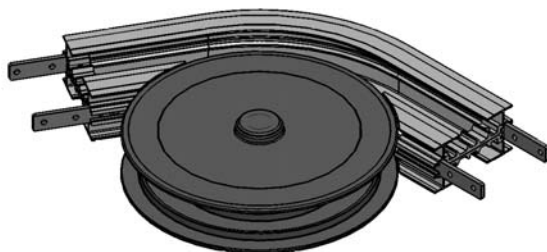
UOM : pc

Chain required 2-way : 1.5 meter

Slide rail required 2-way: 3.0 meter

FL Wheel Bend 60°

FLWB-60R210



UOM : pc

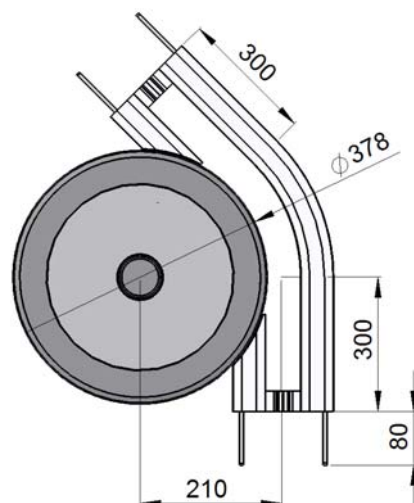
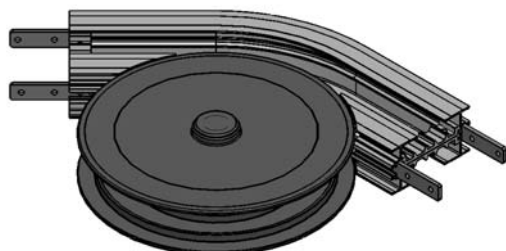
Chain required 2-way : 1.3 meter

Slide rail required 2-way: 2.5 meter

FL SERIES

FL Wheel Bend 45°

FLWB-45R210



UOM : pc

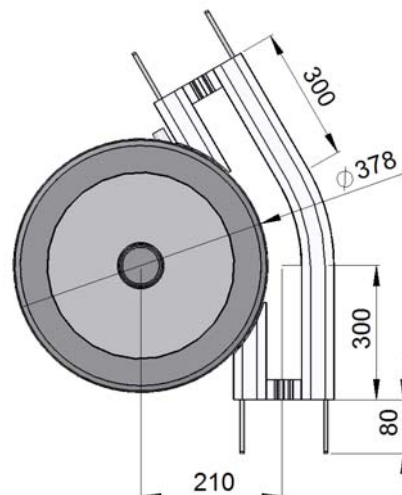
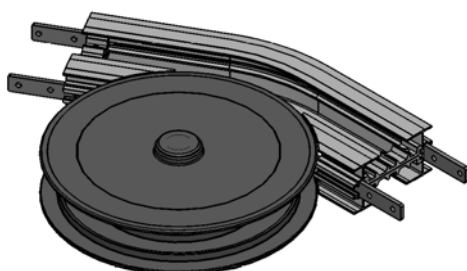
Chain required 2-way : 1.4 meter

Slide rail required 2-way: 2.6 meter

FL

FL Wheel Bend 30°

FLWB-30R210



UOM : pc

Chain required 2-way : 1.1 meter

Slide rail required 2-way: 2.1 meter

FL Wheel Bend 5° - 180°

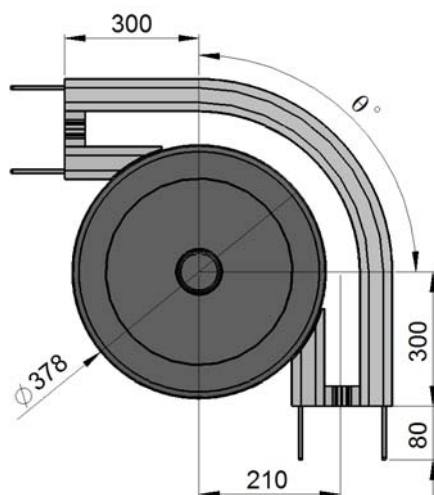
Example for FL Wheel Bend Ordering

Wheel bend, $\Theta^\circ \pm 1^\circ$

FLWB- Θ° R210

If an angle of 65° is needed for wheel bend, so the ordering part number is

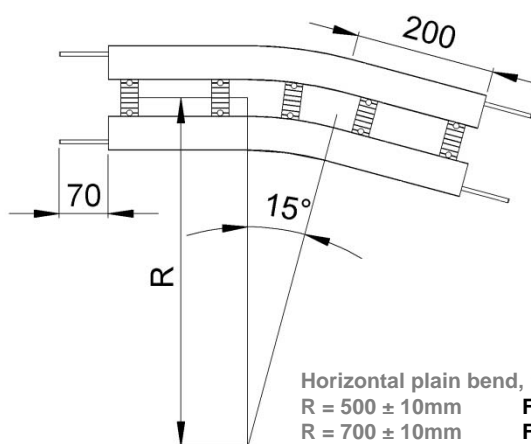
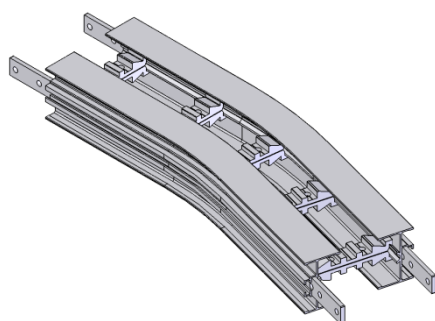
FLWB-65R210



The outer bend is assembled using connecting strip (FACS-25x140A). Angle of Θ° must be indicated when ordering.

FL SERIES

FL Horizontal Plain Bend 15°



FL

UOM : pc

Chain required 2-way (500, 700, 1000) : 1.1, 1.2, 1.4 meter

Slide rail required 2-way (500, 700, 1000): 2.2, 2.4, 2.8 meter

Horizontal plain bend, $15^\circ \pm 1^\circ$

R = $500 \pm 10\text{mm}$

FLHB-15R500

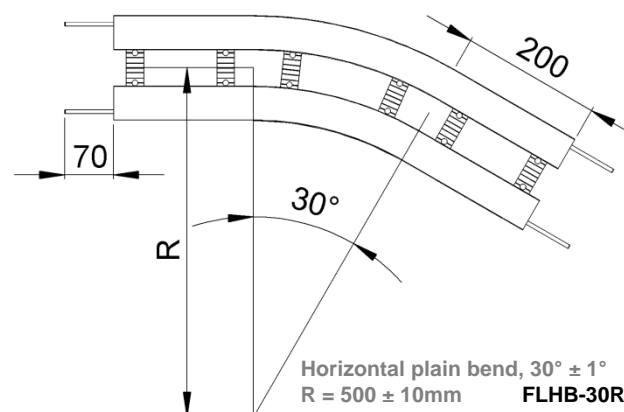
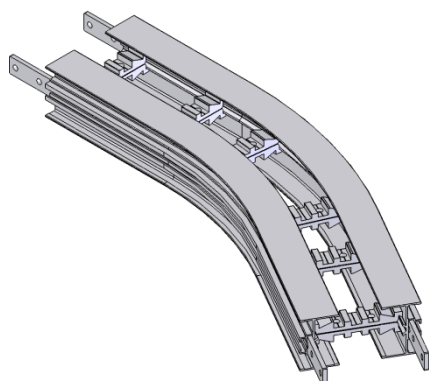
R = $700 \pm 10\text{mm}$

FLHB-15R700

R = $1000 \pm 10\text{mm}$

FLHB-15R1000

FL Horizontal Plain Bend 30°



UOM : pc

Chain required 2-way (500, 700, 1000) : 1.4, 1.6, 1.9 meter

Slide rail required 2-way (500, 700, 1000): 2.8, 3.2, 3.8 meter

Horizontal plain bend, $30^\circ \pm 1^\circ$

R = $500 \pm 10\text{mm}$

FLHB-30R500

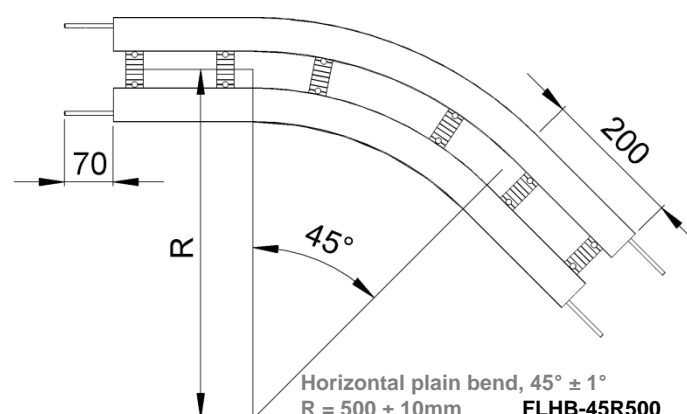
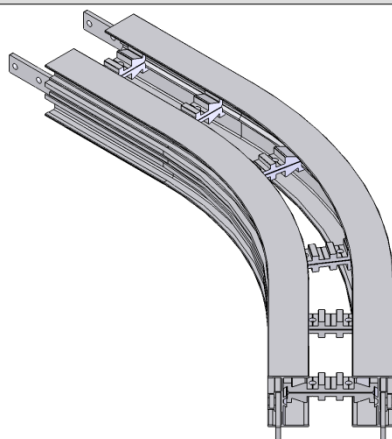
R = $700 \pm 10\text{mm}$

FLHB-30R700

R = $1000 \pm 10\text{mm}$

FLHB-30R1000

FL Horizontal Plain Bend 45°



UOM : pc

Chain required 2-way (500, 700, 1000) : 1.6, 1.9, 2.4 meter

Slide rail required 2-way (500, 700, 1000): 2.9, 3.3, 3.9 meter

Horizontal plain bend, $45^\circ \pm 1^\circ$

R = $500 \pm 10\text{mm}$

FLHB-45R500

R = $700 \pm 10\text{mm}$

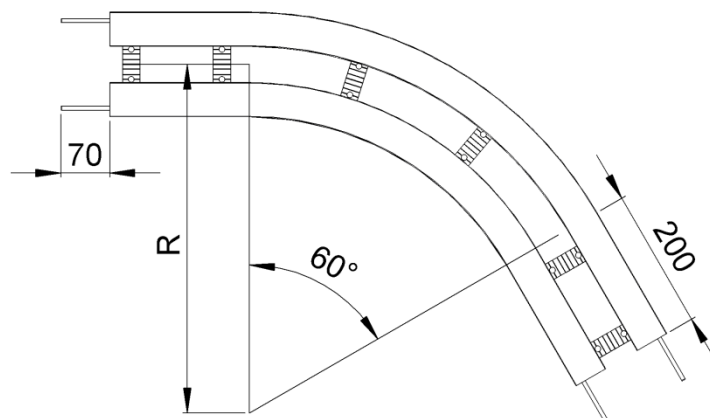
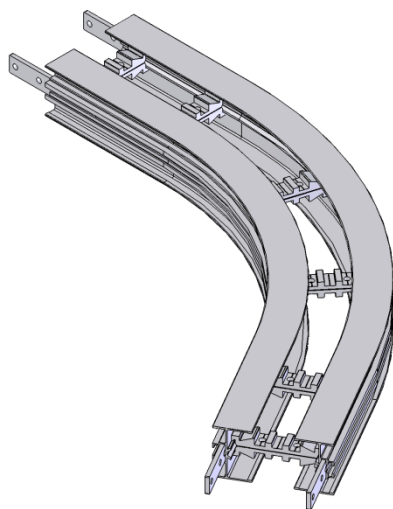
FLHB-45R700

R = $1000 \pm 10\text{mm}$

FLHB-45R1000

FL SERIES

FL Horizontal Plain Bend 60°



FL

UOM : pc

Chain required 2-way (500, 700, 1000) : 1.9, 2.3, 2.9 meter

Slide rail required 2-way (500, 700, 1000): 3.7, 4.6, 5.8 meter

Horizontal plain bend, $60^\circ \pm 1^\circ$

R = $500 \pm 10\text{mm}$

FLHB-60R500

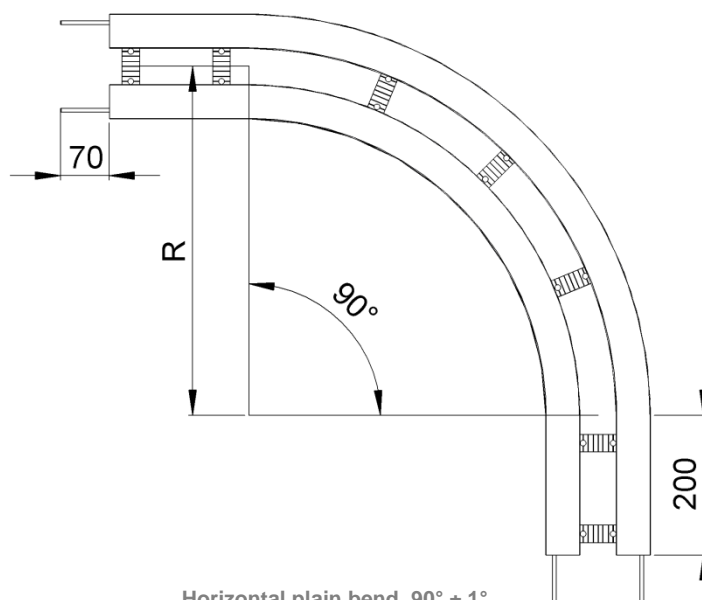
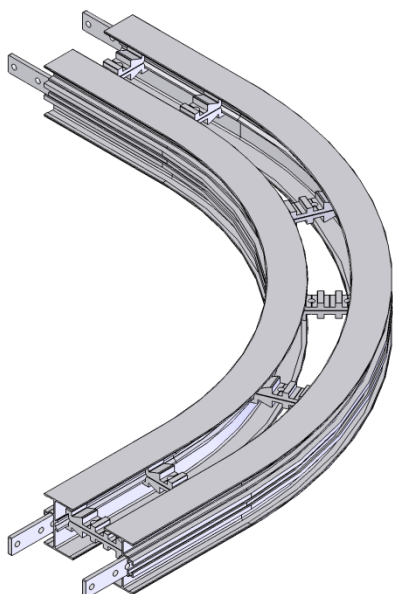
R = $700 \pm 10\text{mm}$

FLHB-60R700

R = $1000 \pm 10\text{mm}$

FLHB-60R1000

FL Horizontal Plain Bend 90°



UOM : pc

Chain required 2-way (500, 700, 1000) : 2.4, 3.0, 4.0 meter

Slide rail required 2-way (500, 700, 1000): 4.8, 6.0, 8.0 meter

Horizontal plain bend, $90^\circ \pm 1^\circ$

R = $500 \pm 10\text{mm}$

FLHB-90R500

R = $700 \pm 10\text{mm}$

FLHB-90R700

R = $1000 \pm 10\text{mm}$

FLHB-90R1000

FL SERIES

FL Horizontal Plain Bend 180°

Horizontal plain bend, 180° ± 1°

R = 500 ± 10mm	FLHB-180R500
R = 700 ± 10mm	FLHB-180R700
R = 1000 ± 10mm	FLHB-180R1000

UOM : pc

Chain required 2-way (500, 700, 1000) : 4.0, 5.2, 7.1 meter

Slide rail required 2-way (500, 700, 1000): 7.9, 1.1, 14.2 meter

FL

FL Horizontal Plain Bend 5° - 180°

Example for FL Horizontal Plain Bend Ordering

Horizontal plain bend, $\theta^\circ \pm 1^\circ$

R = 500 ± 10mm	FLHB-θ°R500
R = 700 ± 10mm	FLHB-θ°R700
R = 1000 ± 10mm	FLHB-θ°R1000

If an angle of 120° is needed for radius R500 horizontal plain bend, so the ordering part number is

FLHB-120R500

UOM : pc

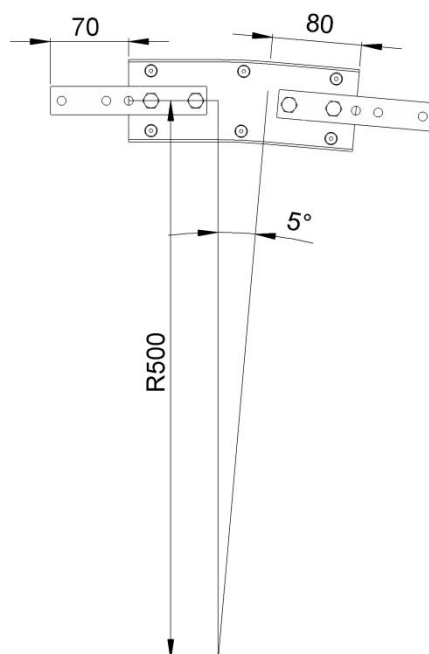
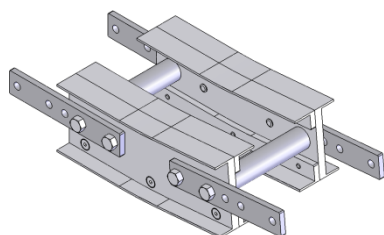
Chain required 2-way (500, 700, 1000) : meter (variable to angle)

Slide rail required 2-way (500, 700, 1000): meter (variable to angle)

FL SERIES

FL Vertical Bend 5°

FLVB-5R500



FL

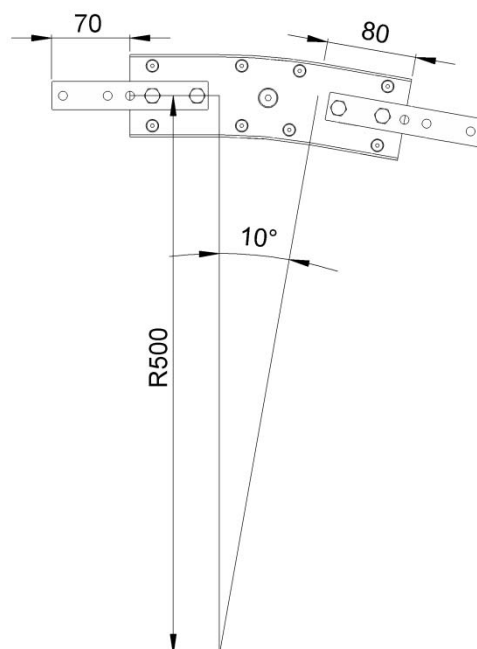
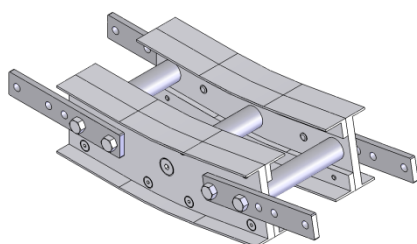
UOM: pc

Chain required 2-way: 0.5 meter

Slide rail required 2-way: 0.9 meter

FL Vertical Bend 10°

FLVB-10R500



UOM: pc

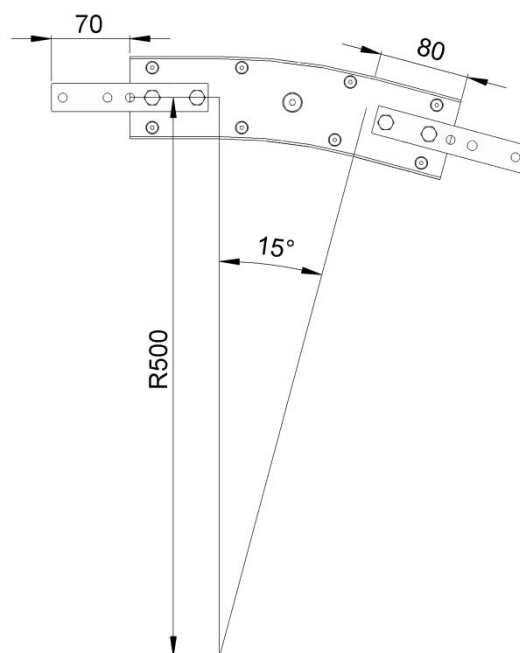
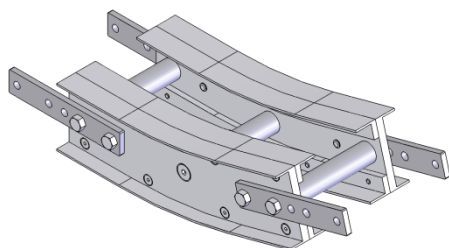
Chain required 2-way: 0.5 meter

Slide rail required 2-way: 1.0 meter

FL SERIES

FL Vertical Bend 15°

FLVB-15R500



FL

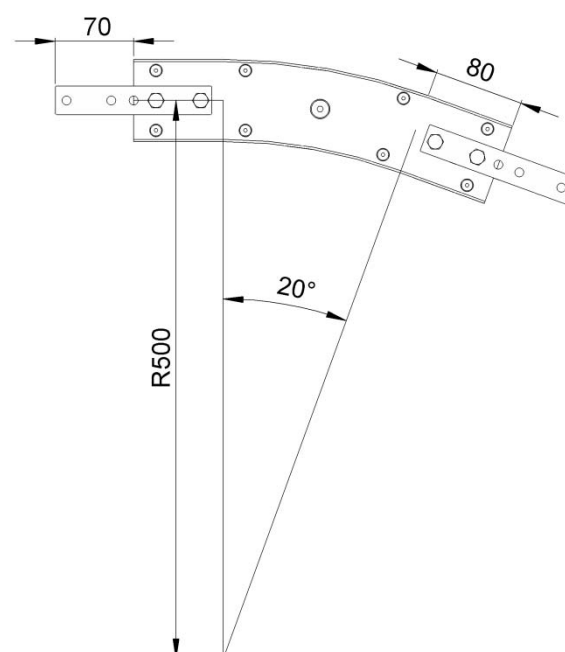
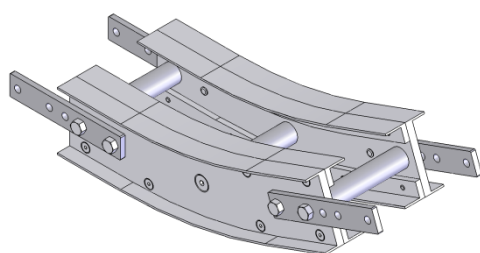
UOM: pc

Chain required 2-way: 0.6 meter

Slide rail required 2-way: 1.2 meter

FL Vertical Bend 20°

FLVB-20R500



UOM: pc

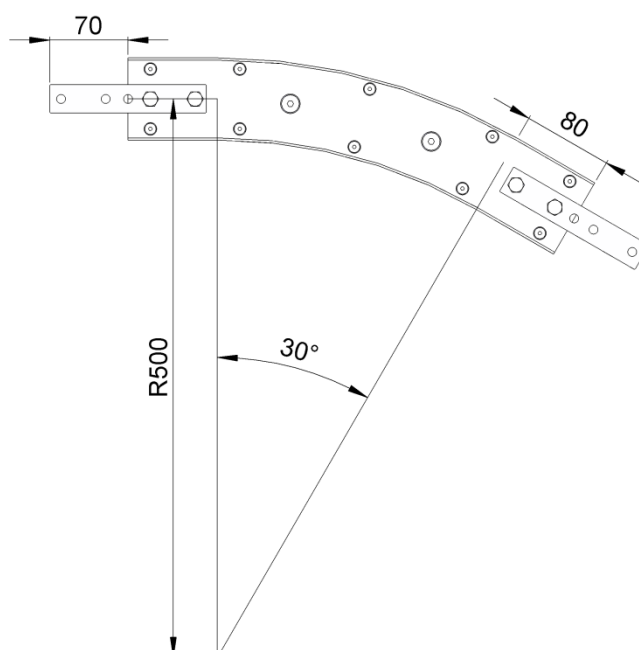
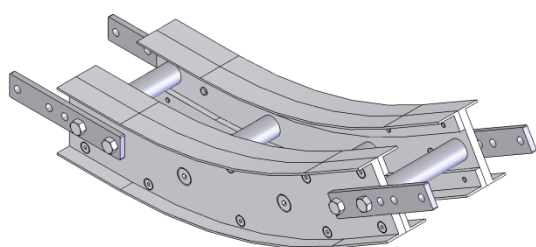
Chain required 2-way: 0.7 meter

Slide rail required 2-way: 1.4 meter

FL SERIES

FL Vertical Bend 30°

FLVB-30R500



FL

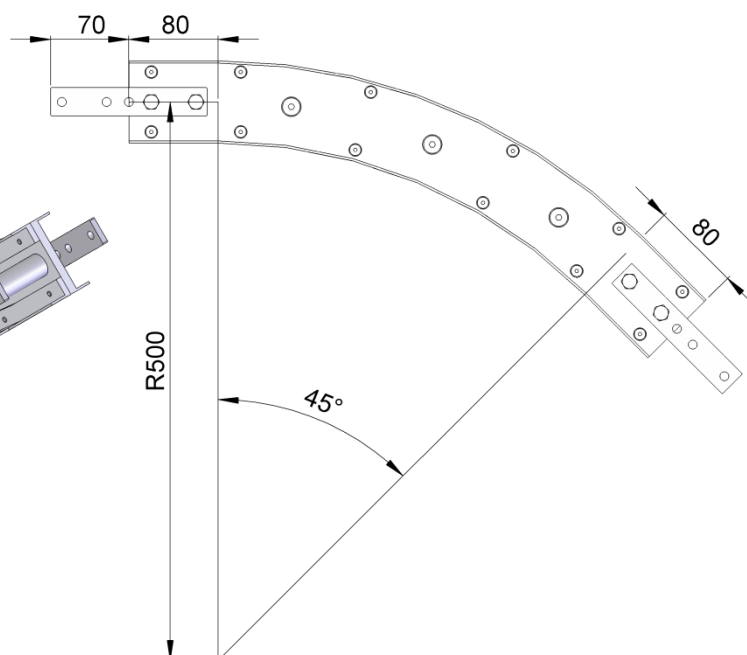
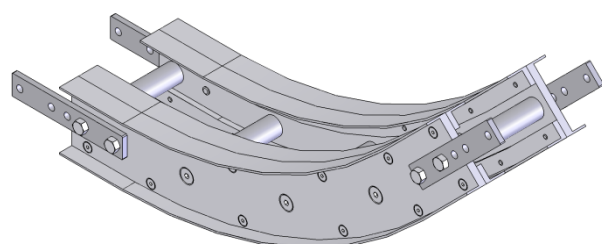
UOM: pc

Chain required 2-way: 0.9 meter

Slide rail required 2-way: 1.7 meter

FL Vertical Bend 45°

FLVB-45R500



UOM: SET

Chain required 2-way: 1.2 meter

Slide rail required 2-way: 2.3 meter

FL SERIES

FL Vertical Bend 5°-90°

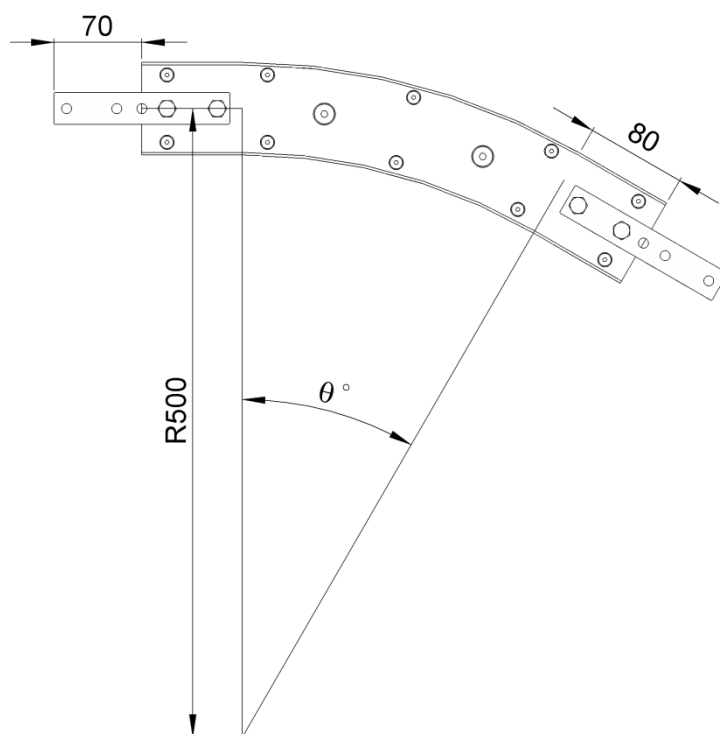
Example for FL Vertical Bend Ordering

Vertical bend, $\Theta^\circ \pm 1^\circ$

FLVB- Θ° R500

If an angle of 65° is needed for vertical bend, so the ordering part number is

FLVB-65R500



FL

The outer bend is assembled using connecting strip (FACS-25x140A) .
Angle of " Θ° " must be indicated when ordering.